

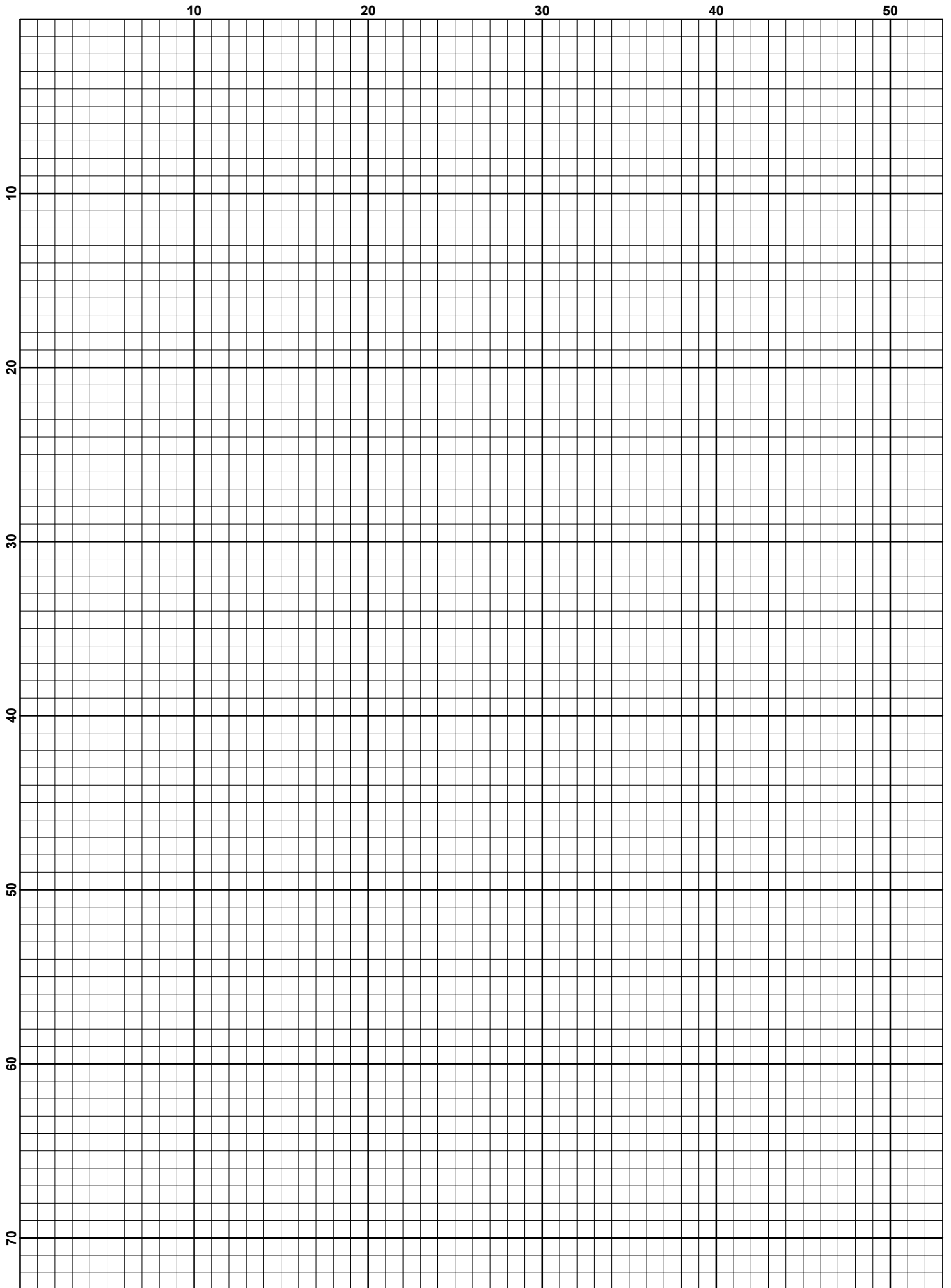
Free Cross Stitch Charts

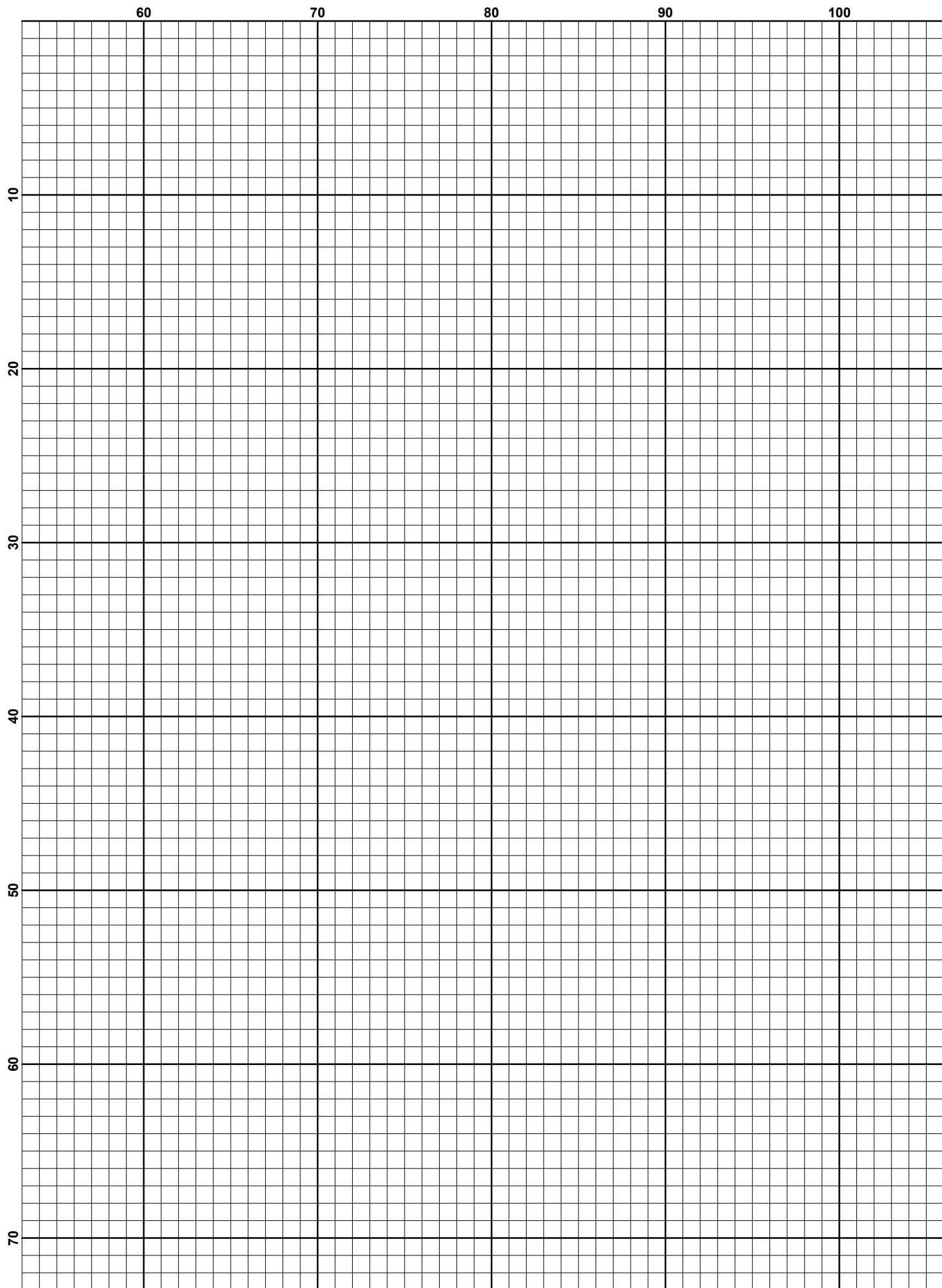
Monster

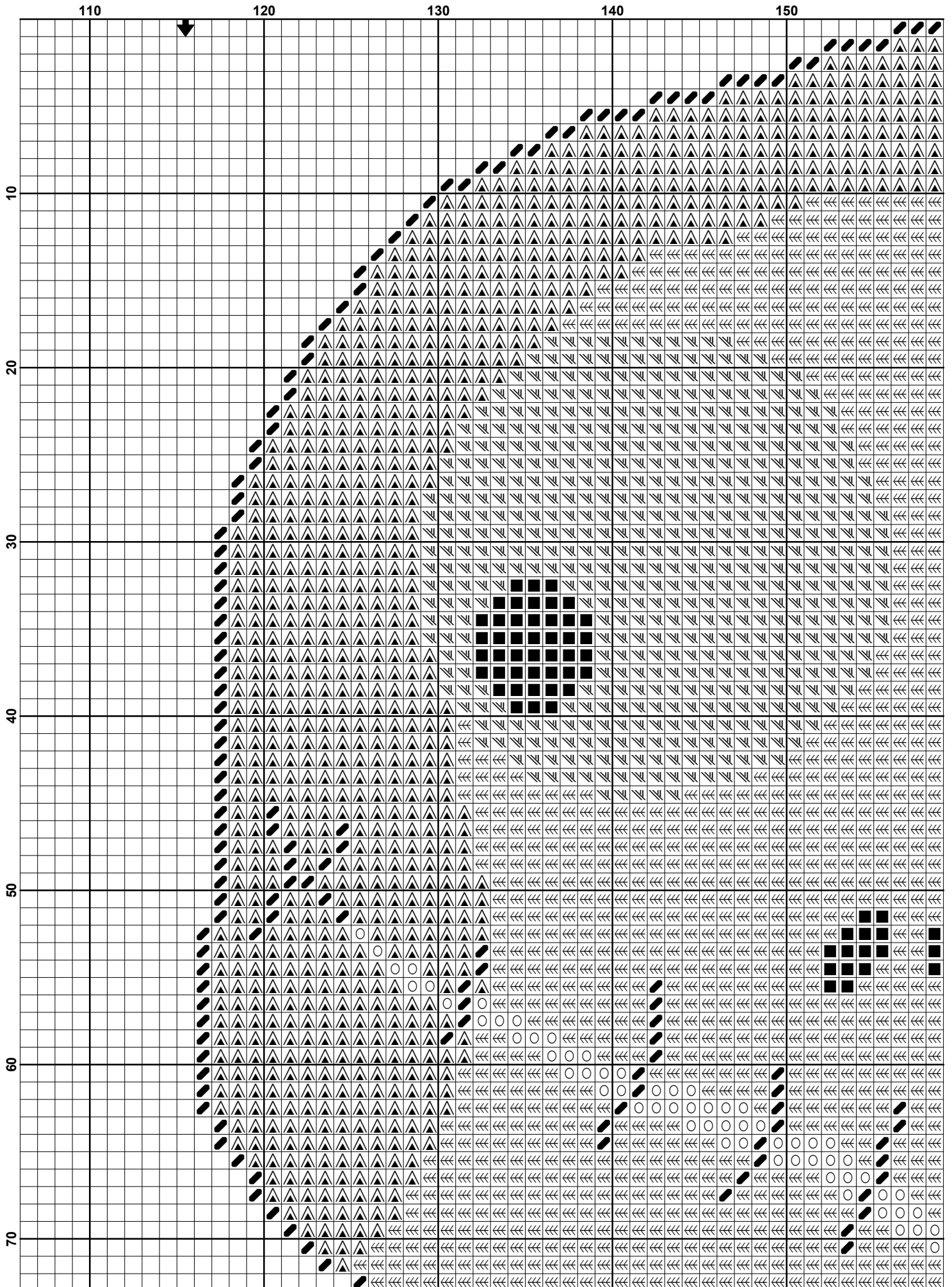


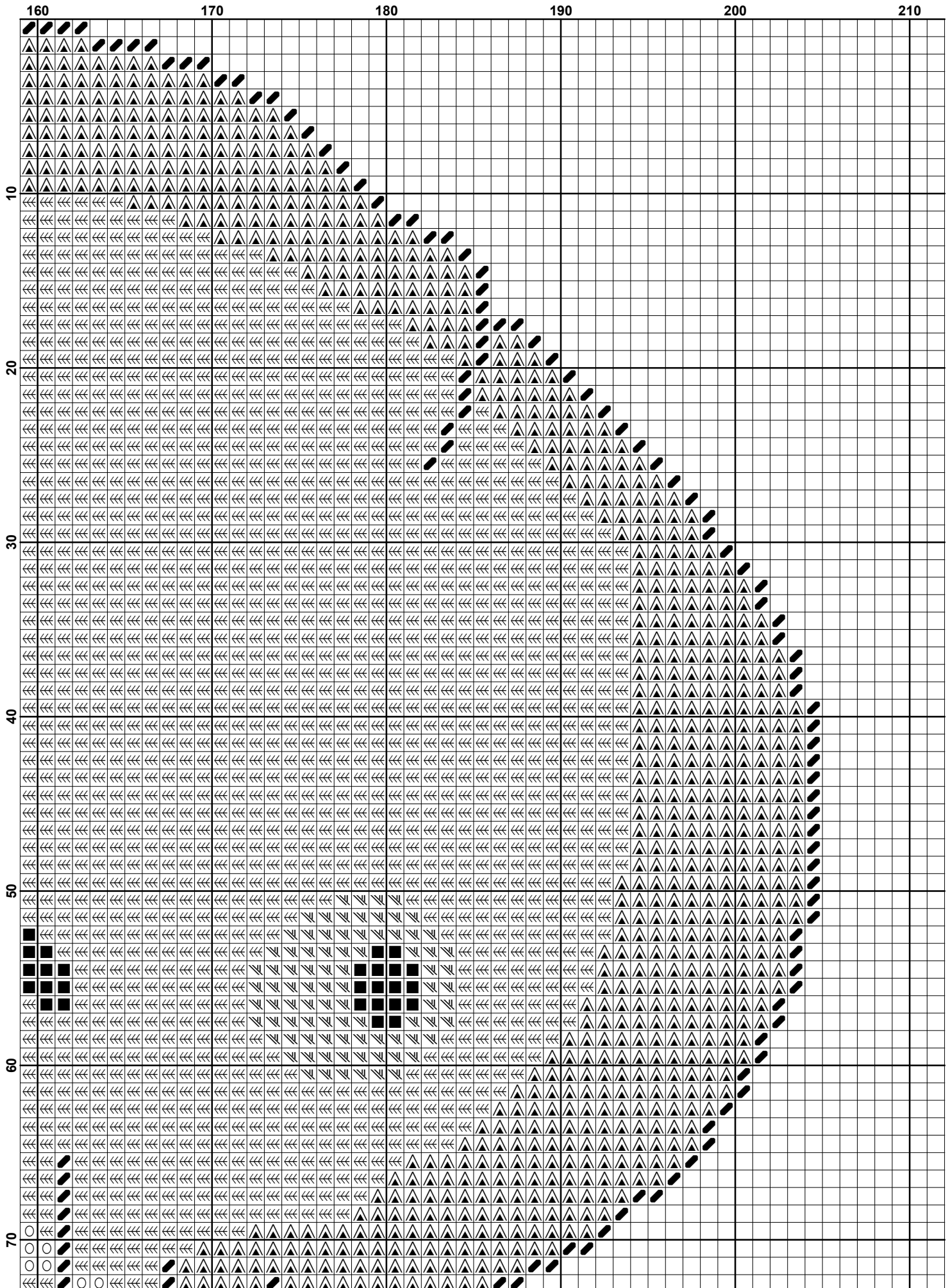
This cross stitch pattern is strictly for personal use only. Please respect my copyright.

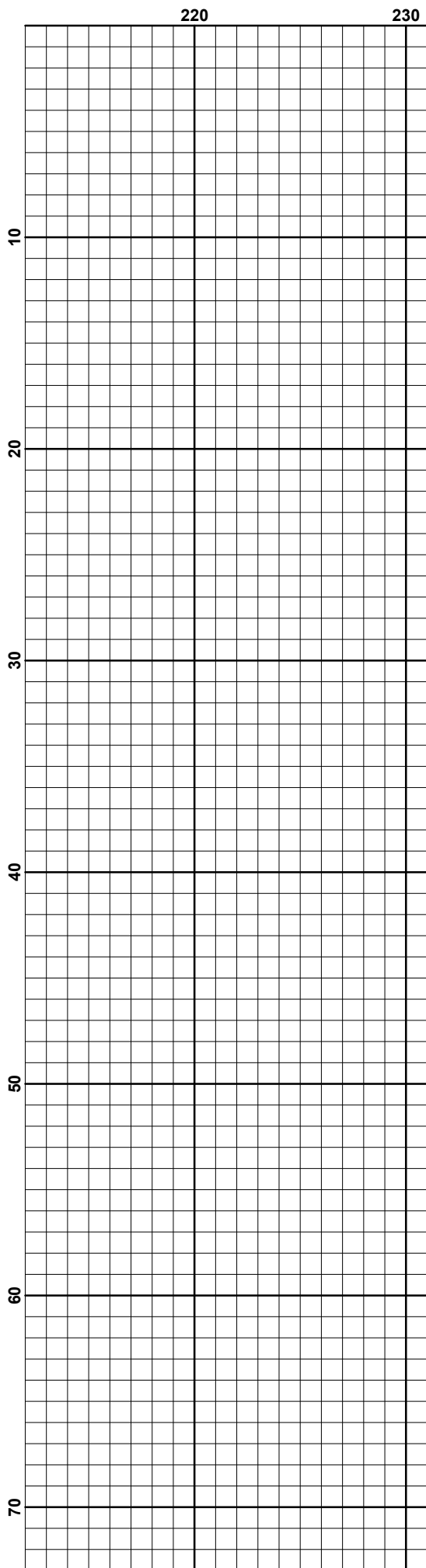
www.freecrossstitchcharts.com

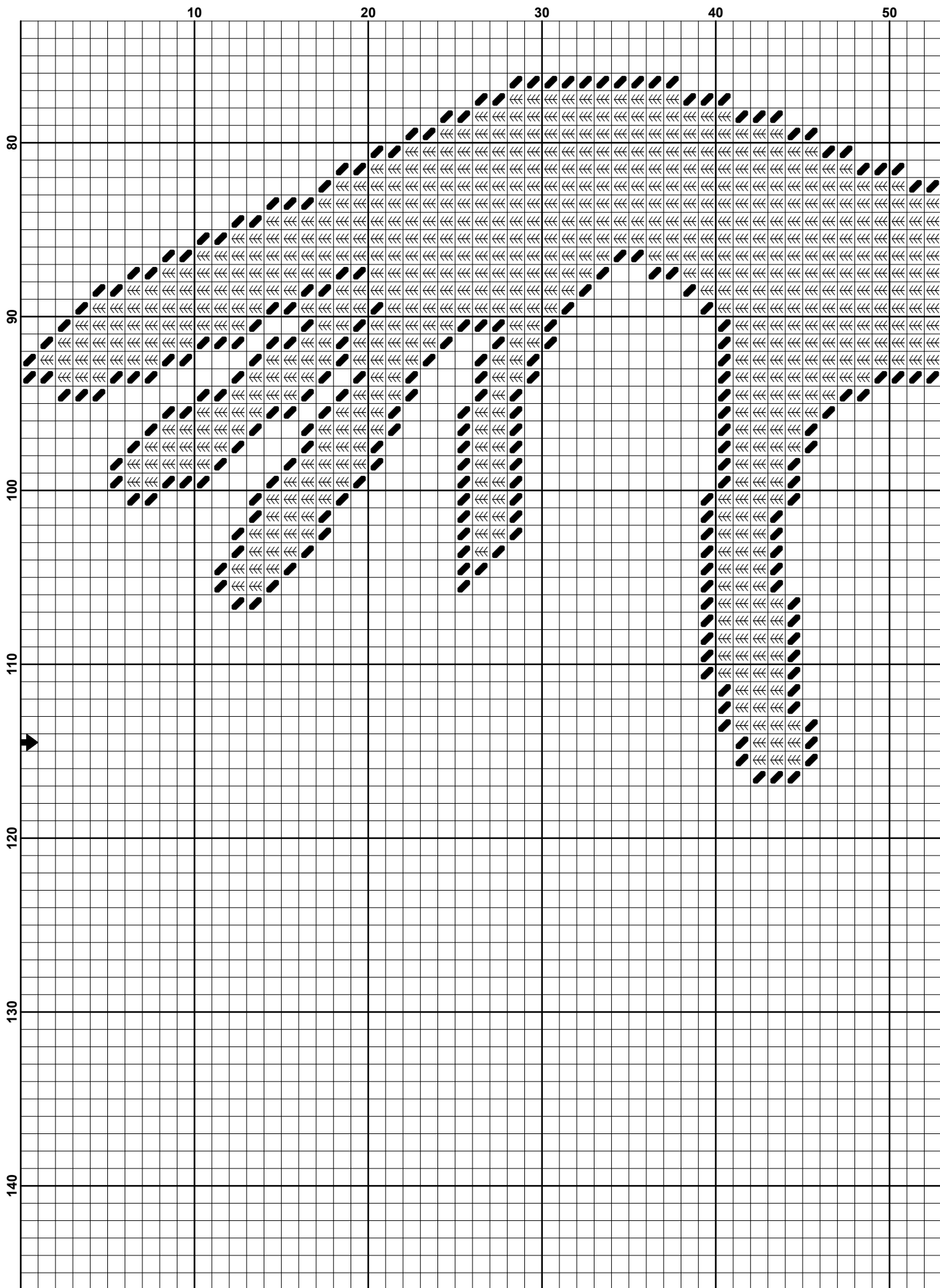


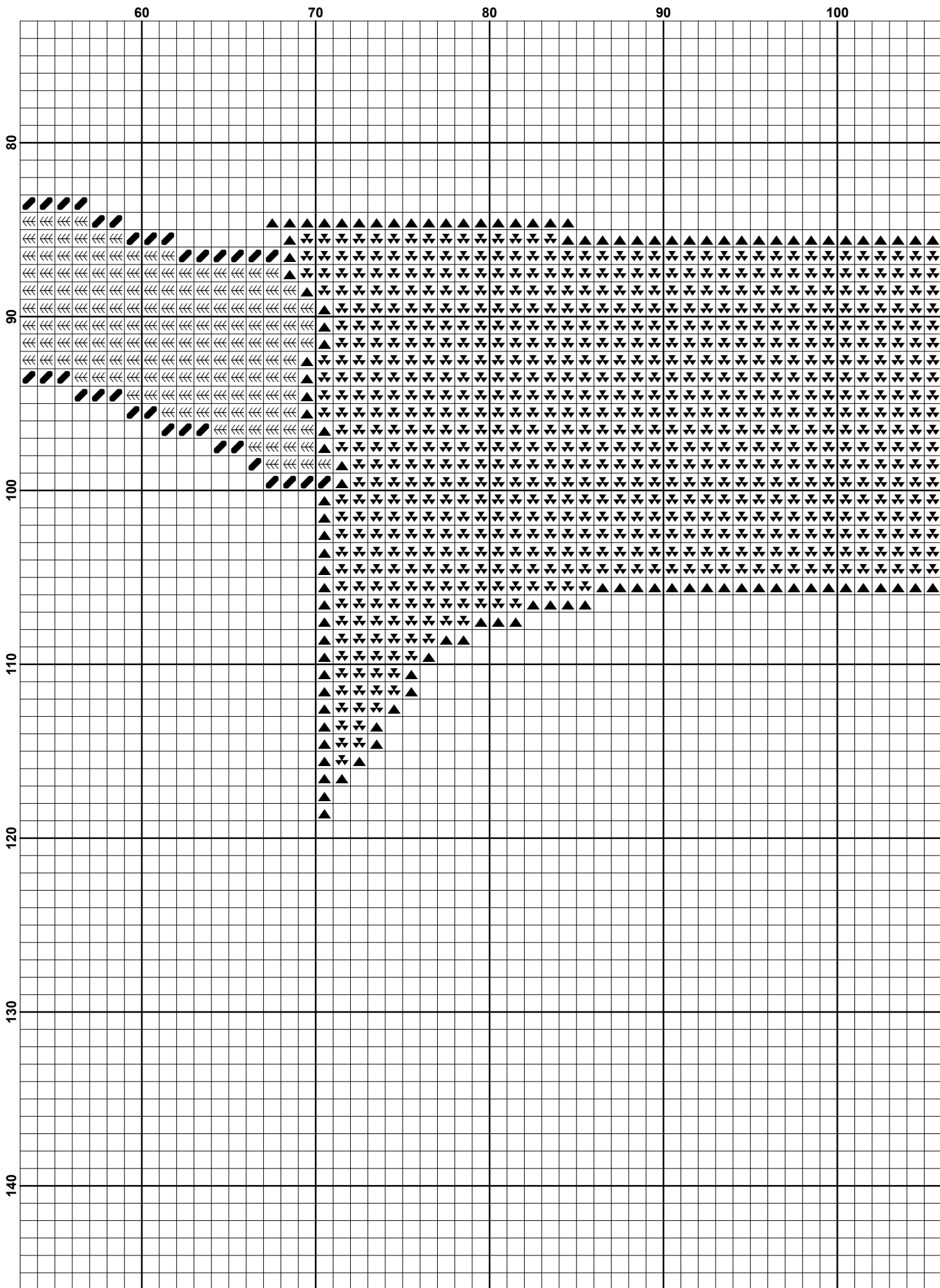


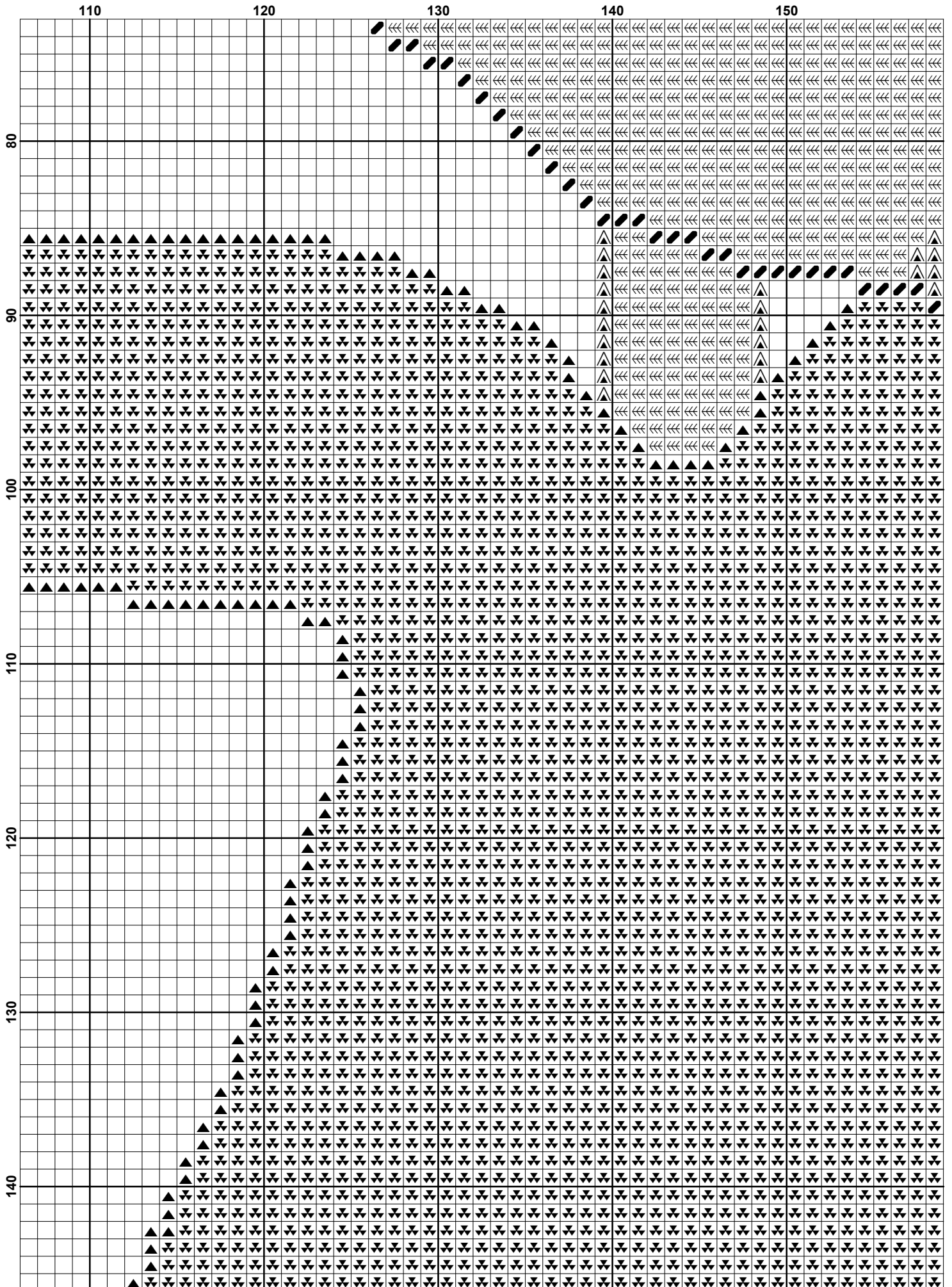


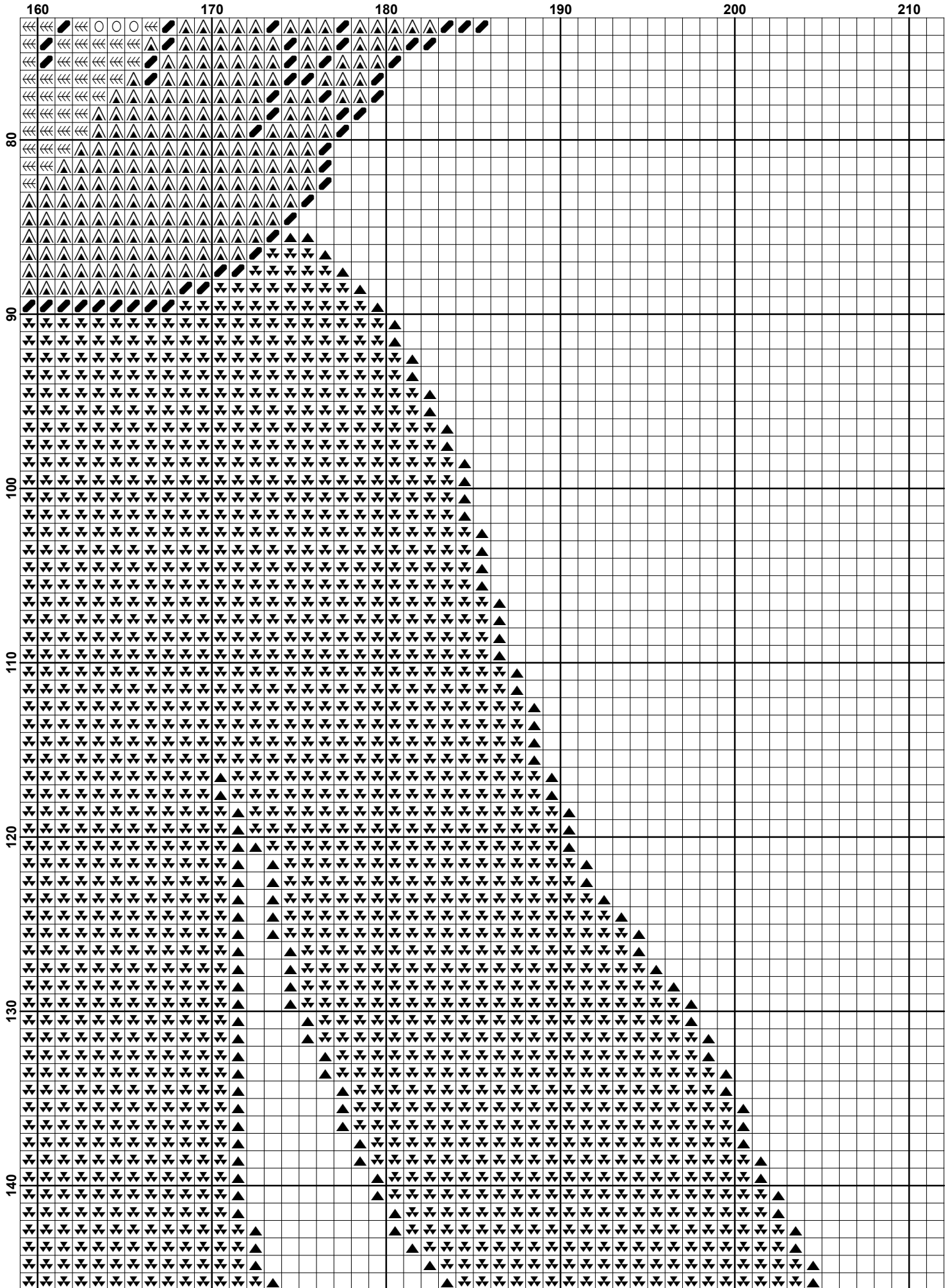


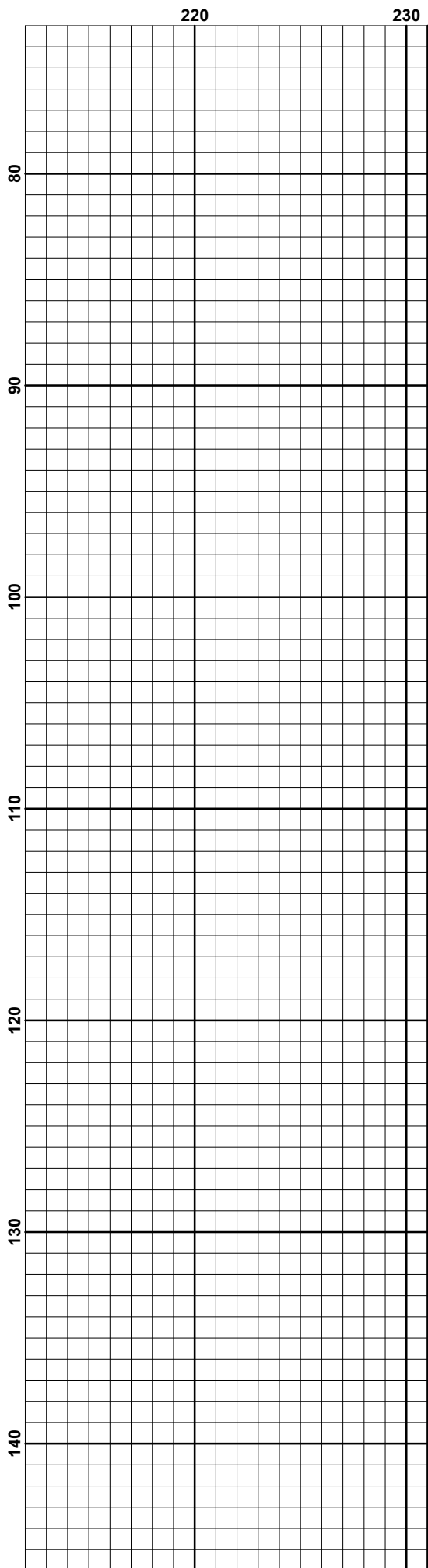


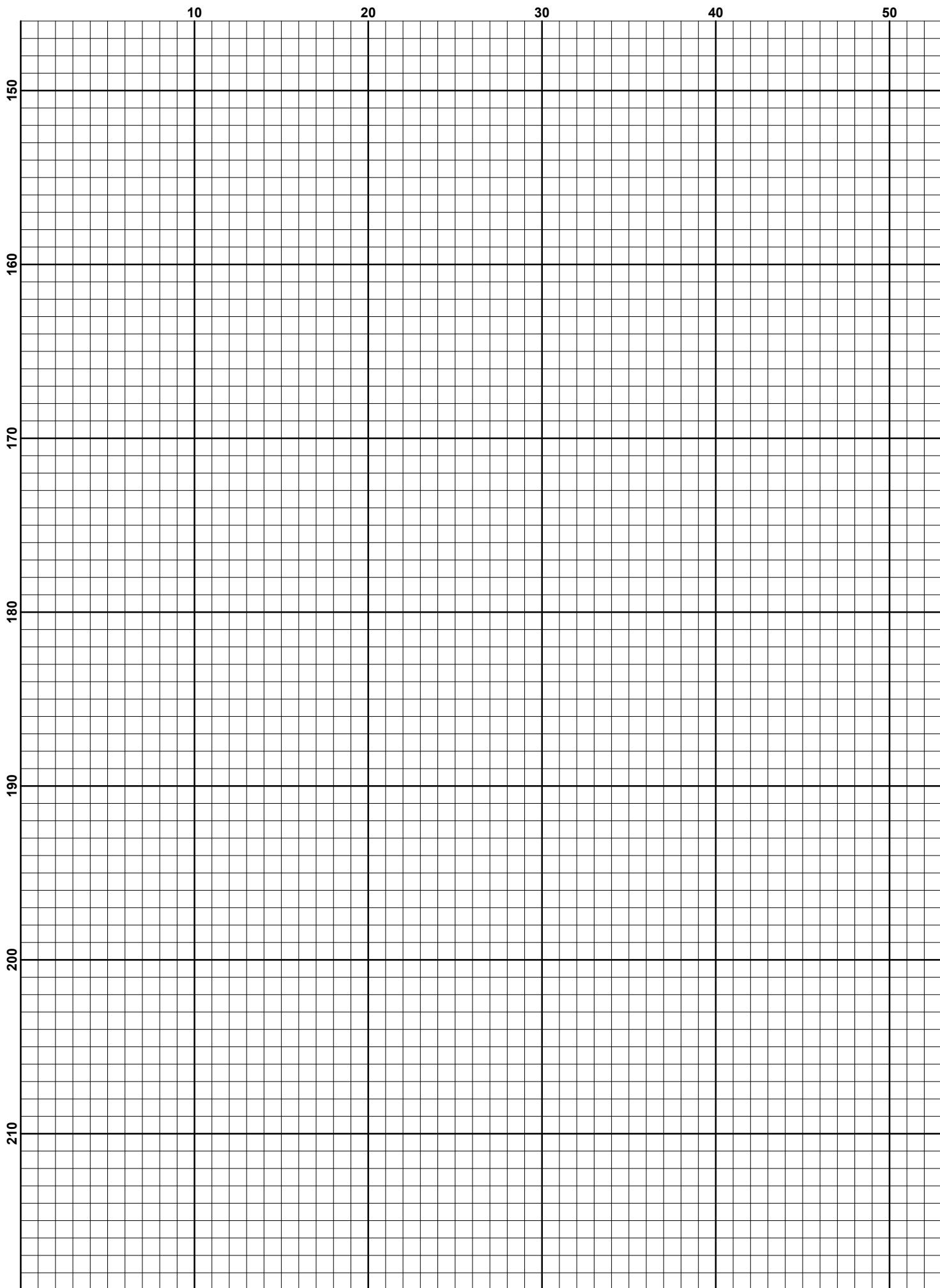


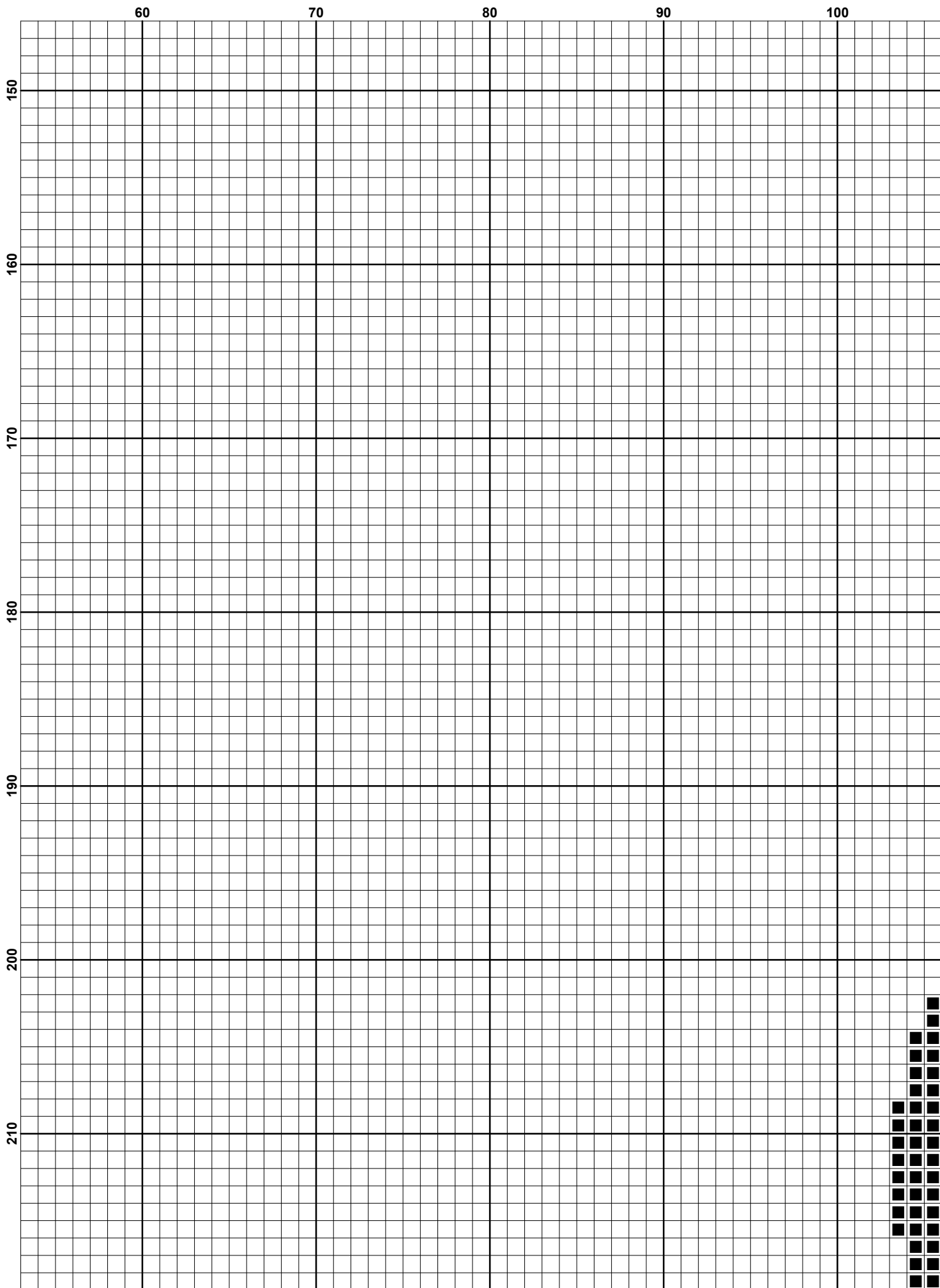


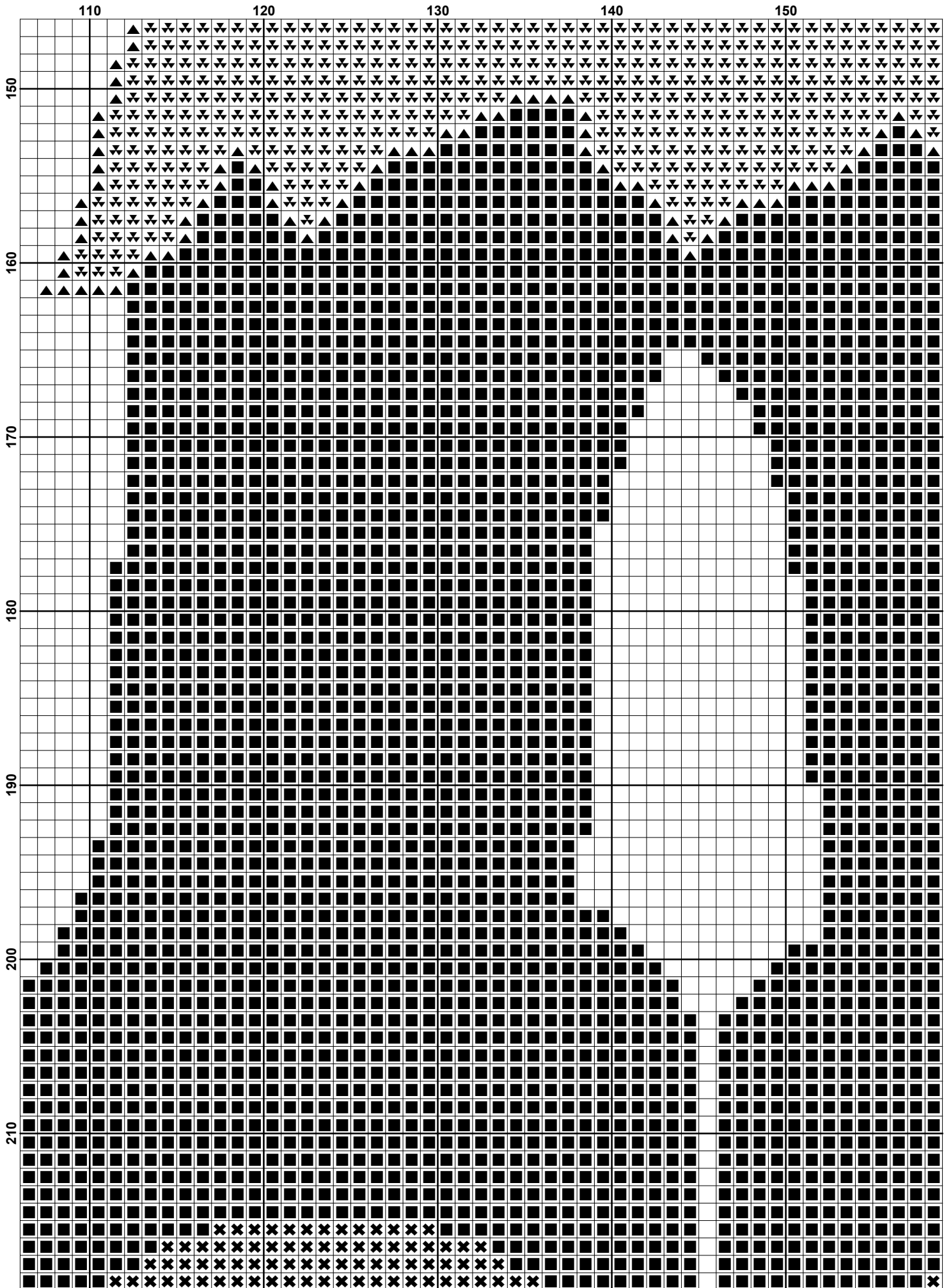


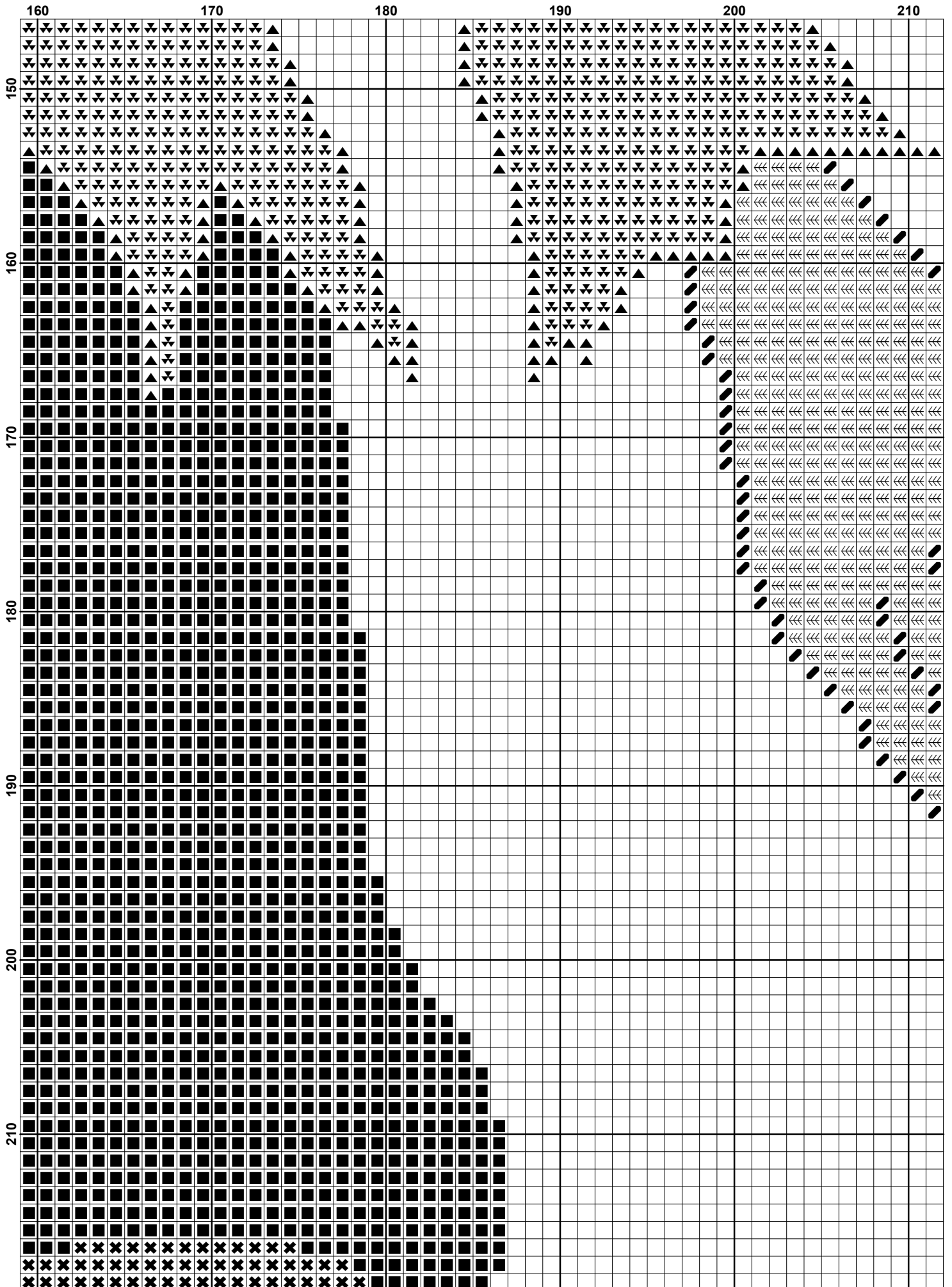


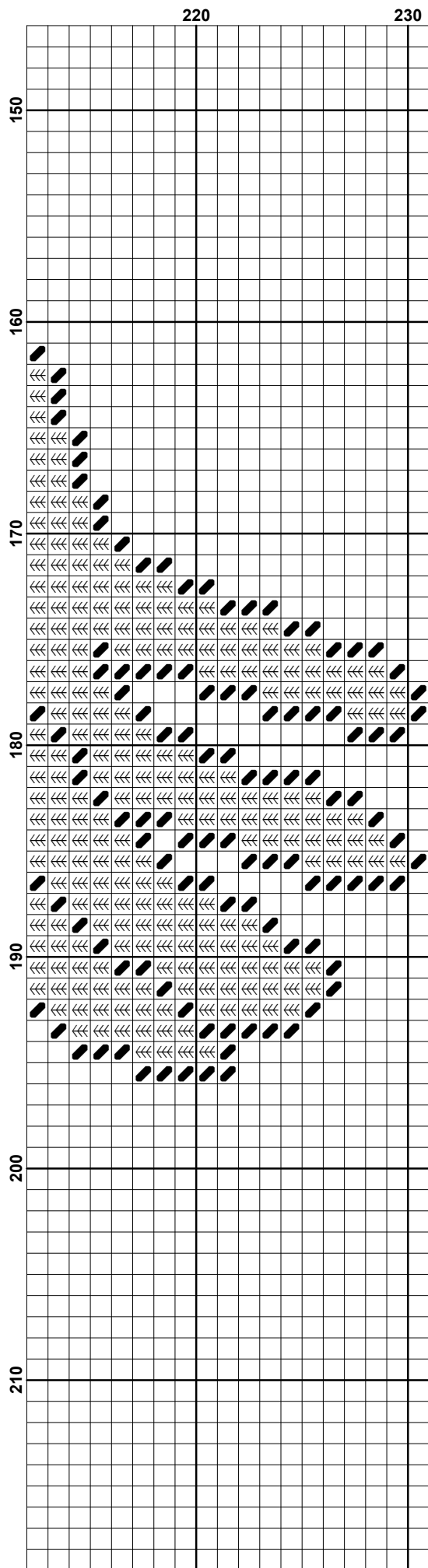


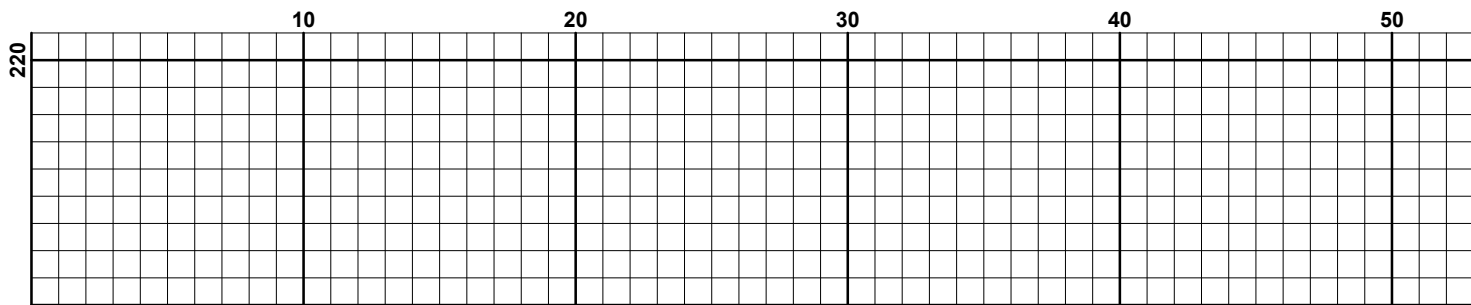


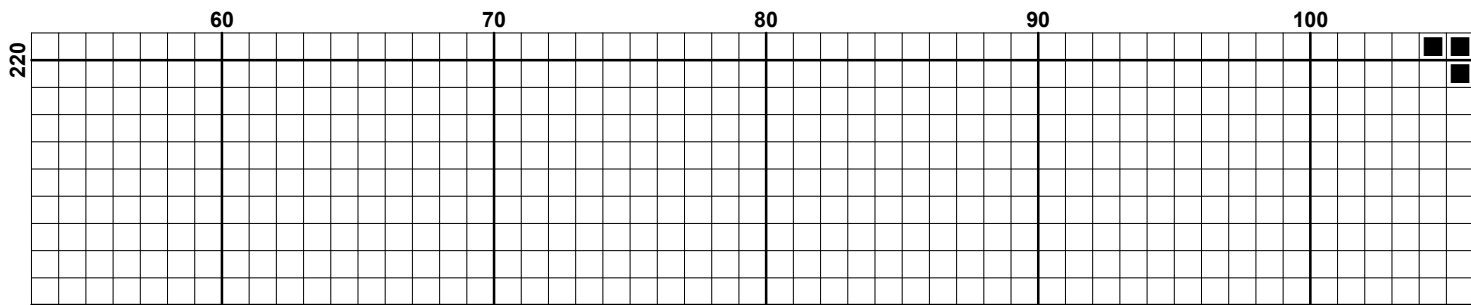


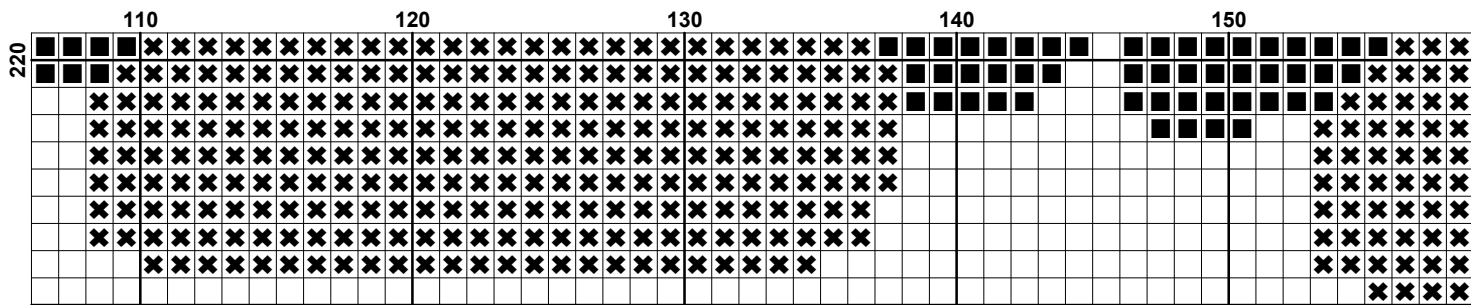


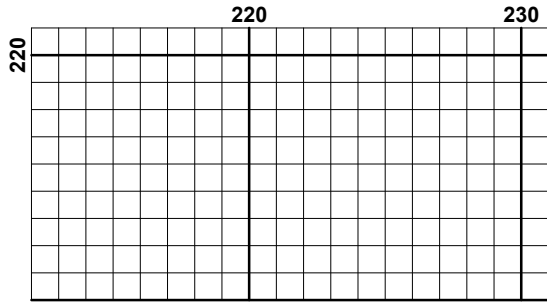





















Pattern Name: Monster
Designed By: Free Cross Stitch Charts
Company: freecrossstitchcharts.com
Copyright: Free Cross Stitch Charts
Fabric: Aida 14, White
 231w X 229h Stitches
Size(s): 14 Count, 16-1/2w X 16-1/4h in
 16 Count, 14-3/8w X 14-1/4h in
 18 Count, 12-3/4w X 12-5/8h in
 22 Count, 10-1/2w X 10-3/8h in

Floss Used for Full Stitches:

Symbol	Strands	Type	Number	Color
	2	DMC	310	Black
	2	DMC	608	Bright Orange
	2	DMC	726	Topaz-LT
	2	DMC	817	Coral Red-VY DK
	2	DMC	890	Pistachio Green-UL DK
	2	DMC	898	Coffee Brown-VY DK
	2	DMC	906	Parrot Green-MD
	2	DMC	907	Parrot Green-LT
	2	DMC	3865	Winter White

Usage Summary**Strands Per Skein:** 6**Skein Length:** 313.0 in

Type	Number	Full	Half	Quarter	Petite	Back(in)	Str(in)	Spec(in)	French	Bead	Skein Est.
■ DMC	310	4085	0	0	0	0.0	0.0	0.0	0	0	2.000
■ DMC	608	5643	0	0	0	0.0	0.0	0.0	0	0	3.000
■ DMC	726	630	0	0	0	0.0	0.0	0.0	0	0	1.000
■ DMC	817	520	0	0	0	0.0	0.0	0.0	0	0	1.000
■ DMC	890	754	0	0	0	0.0	0.0	0.0	0	0	1.000
■ DMC	898	674	0	0	0	0.0	0.0	0.0	0	0	1.000
■ DMC	906	1885	0	0	0	0.0	0.0	0.0	0	0	1.000
■ DMC	907	4464	0	0	0	0.0	0.0	0.0	0	0	2.000
□ DMC	3865	72	0	0	0	0.0	0.0	0.0	0	0	1.000