

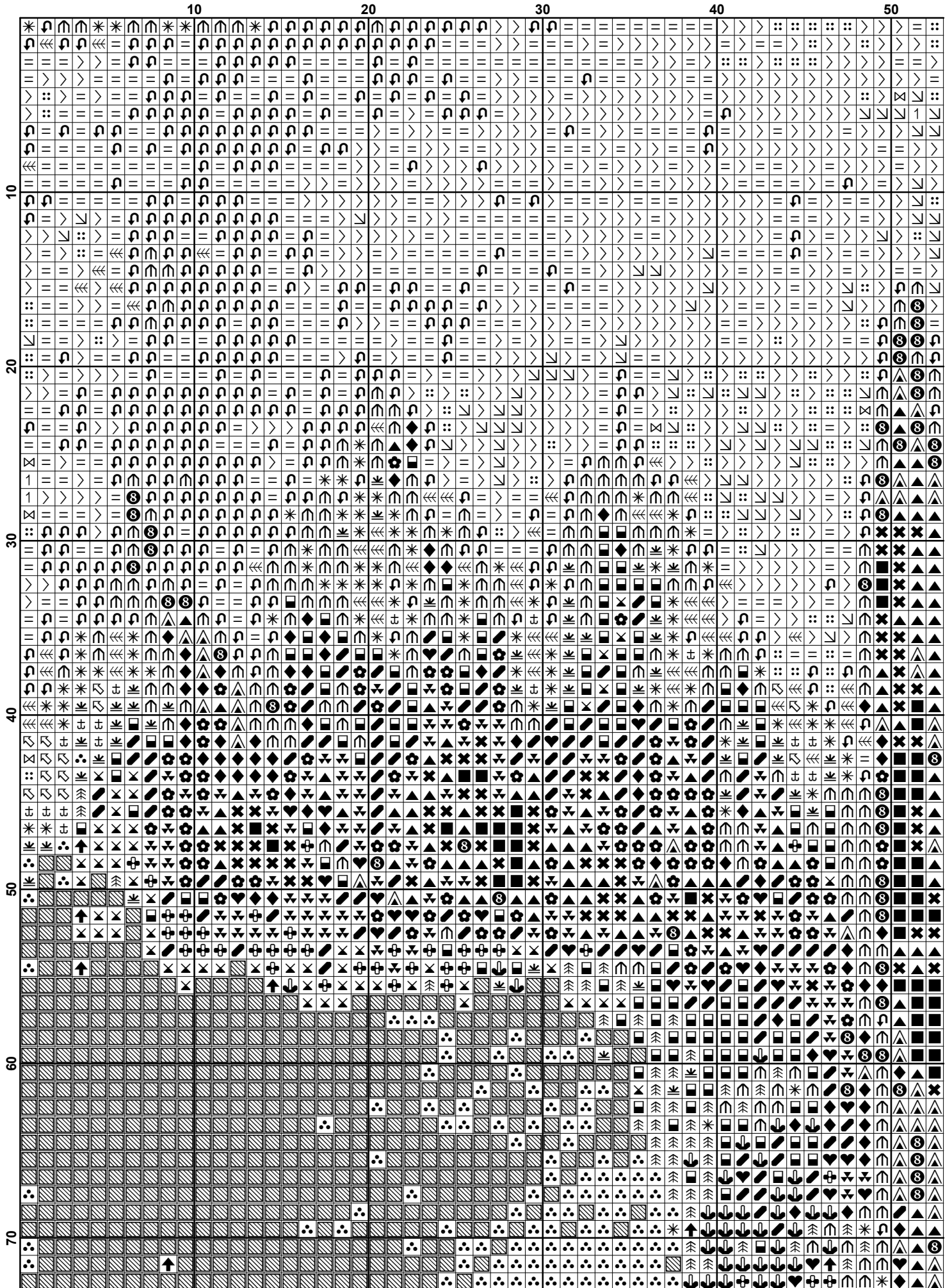
# Free Cross Stitch Charts

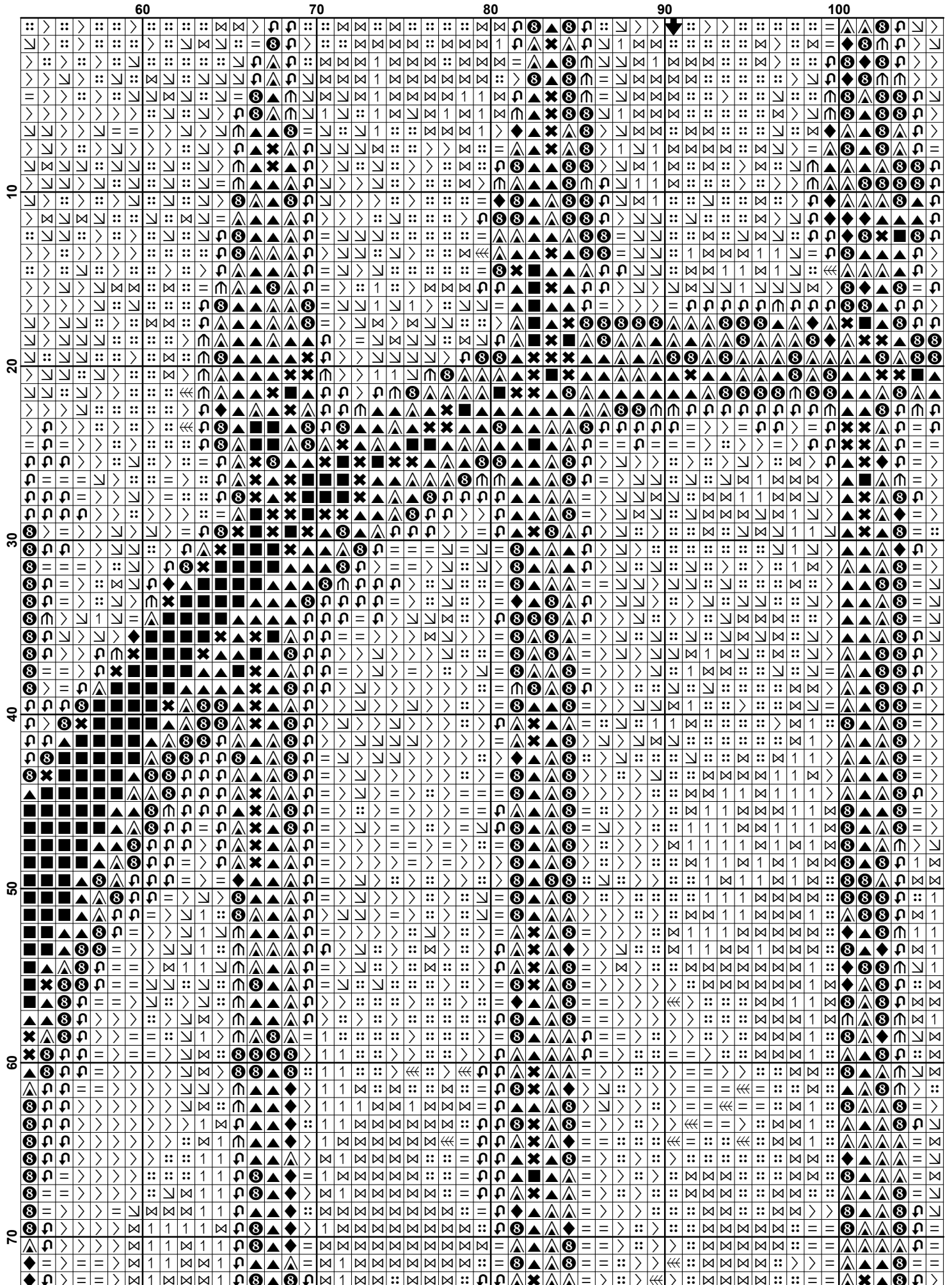
Garden Gate

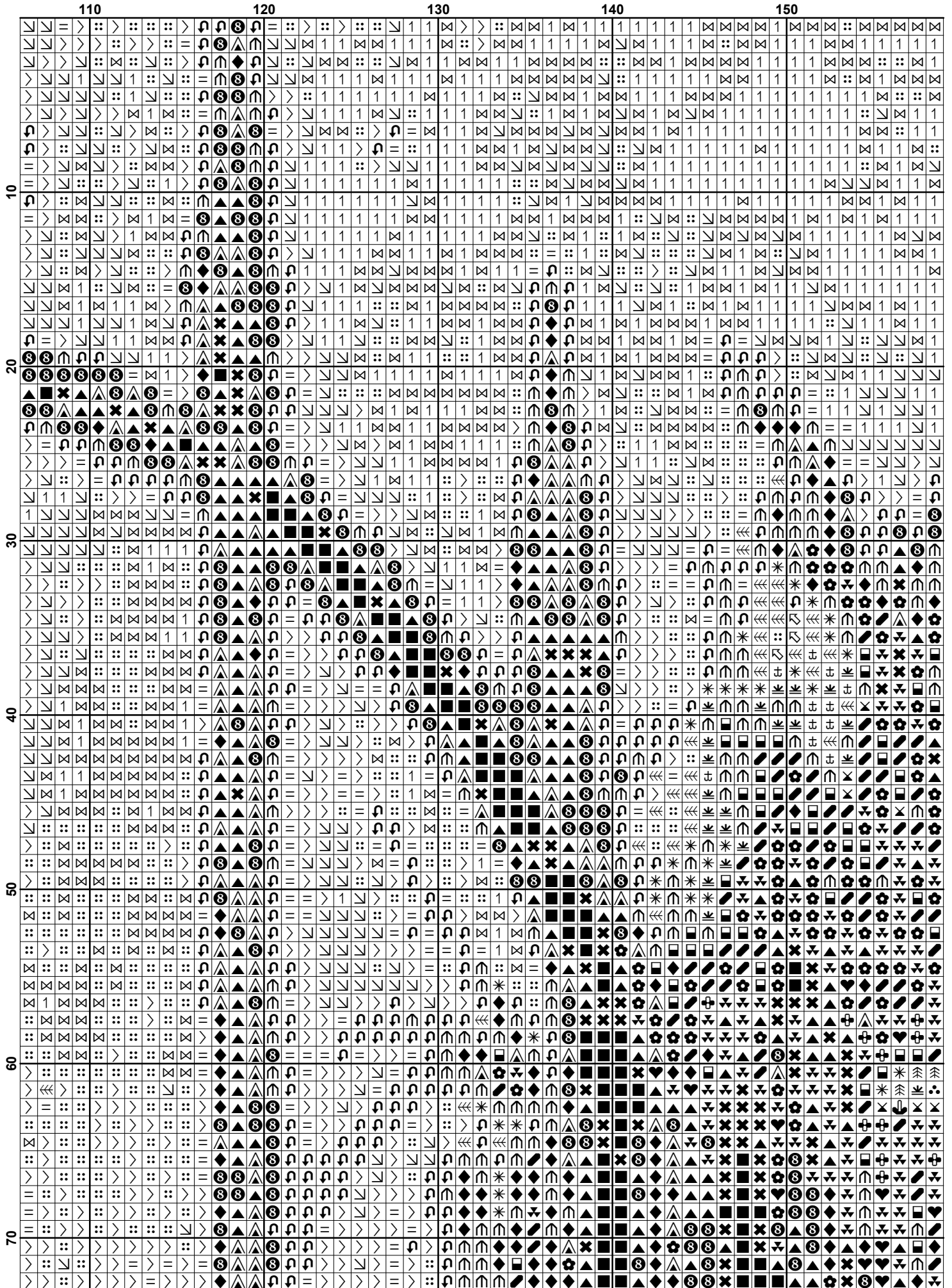


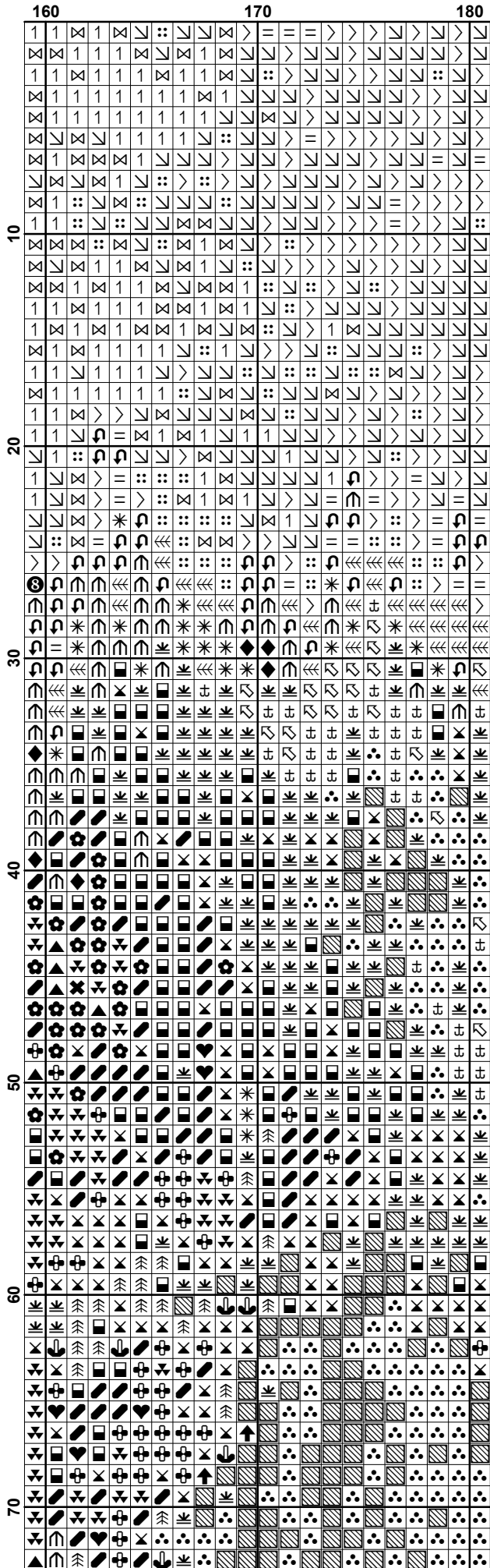
This cross stitch pattern is strictly for personal use only. Please respect my copyright.

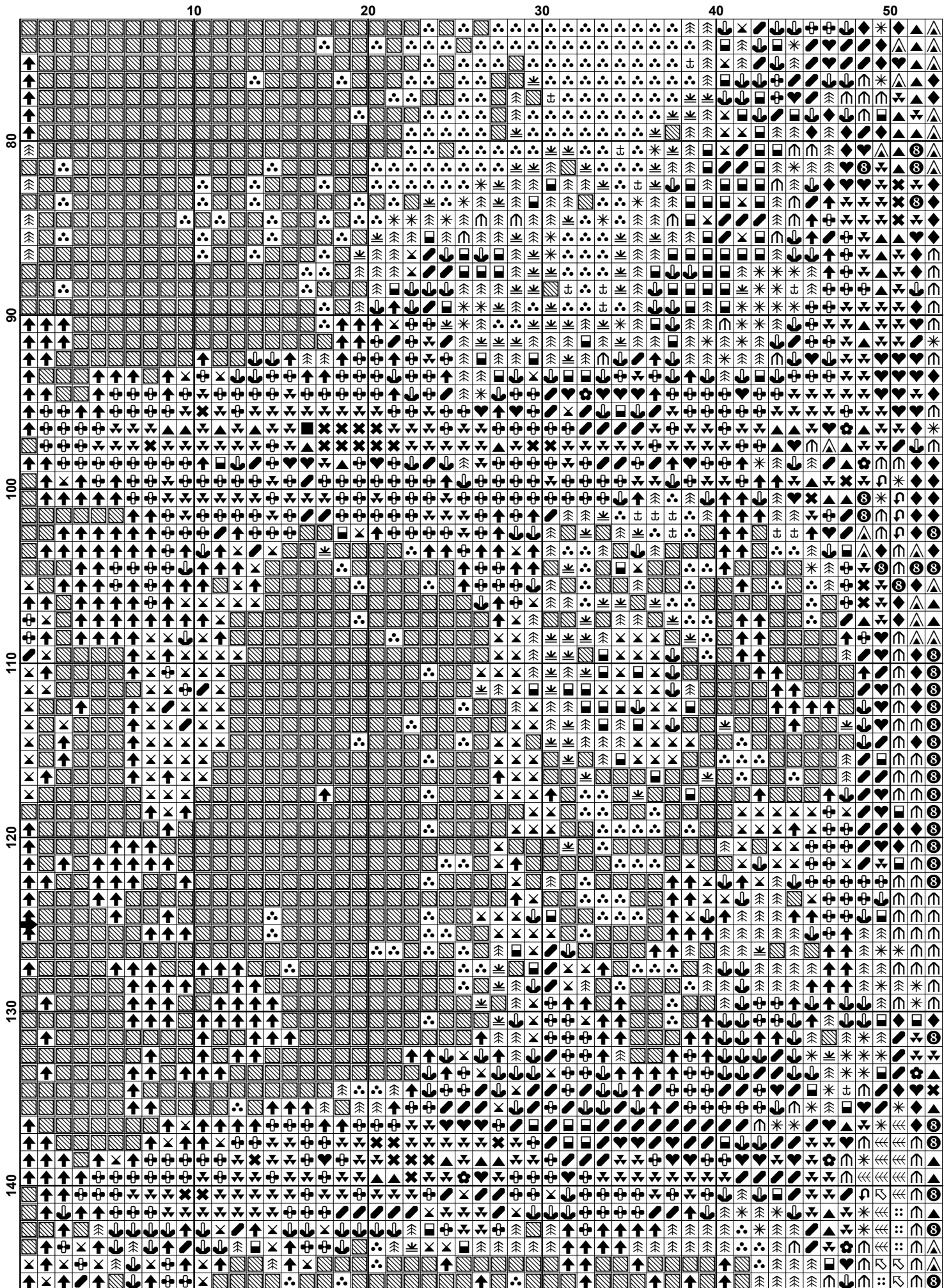
[www.freecrossstitchcharts.com](http://www.freecrossstitchcharts.com)

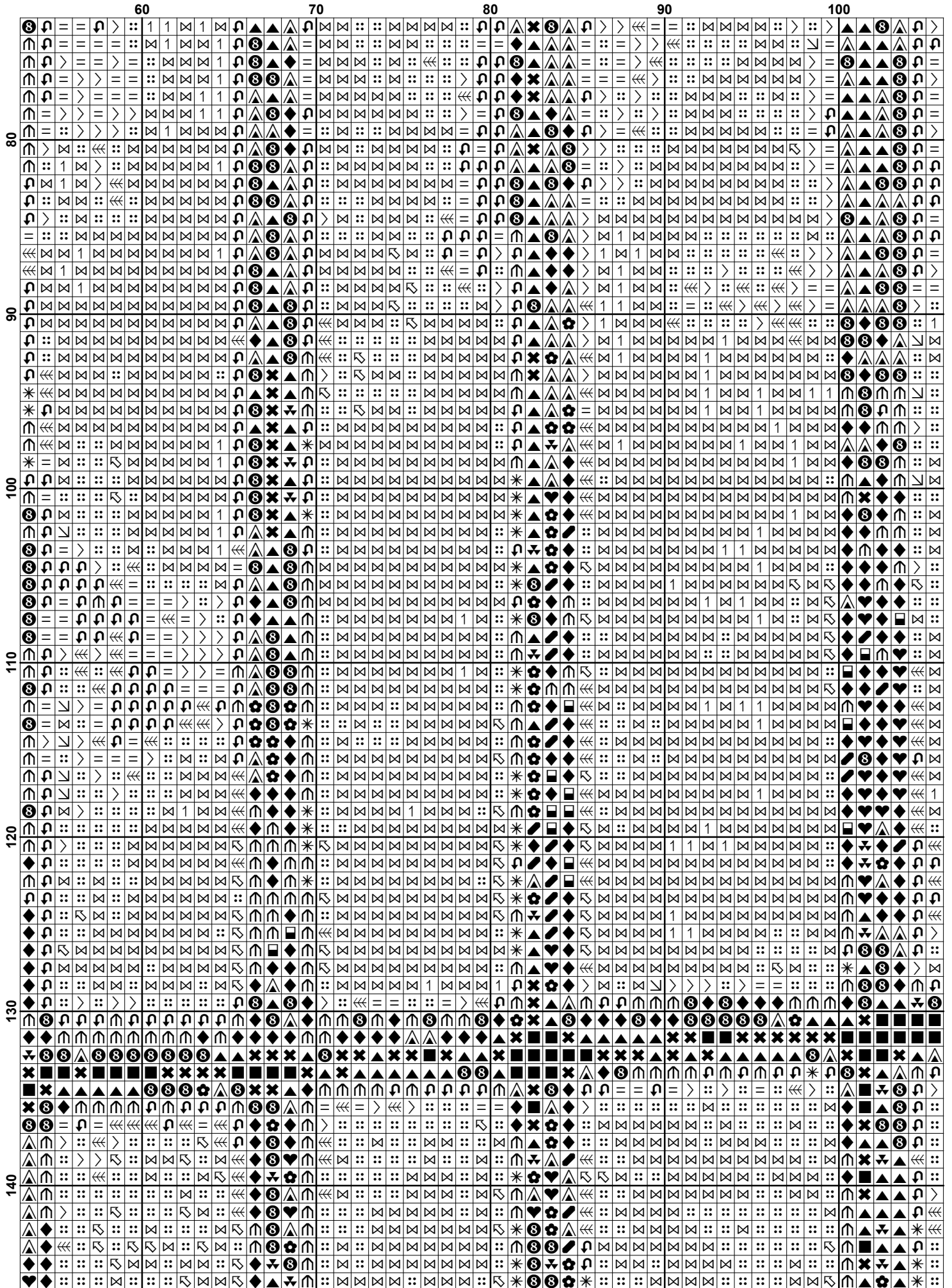


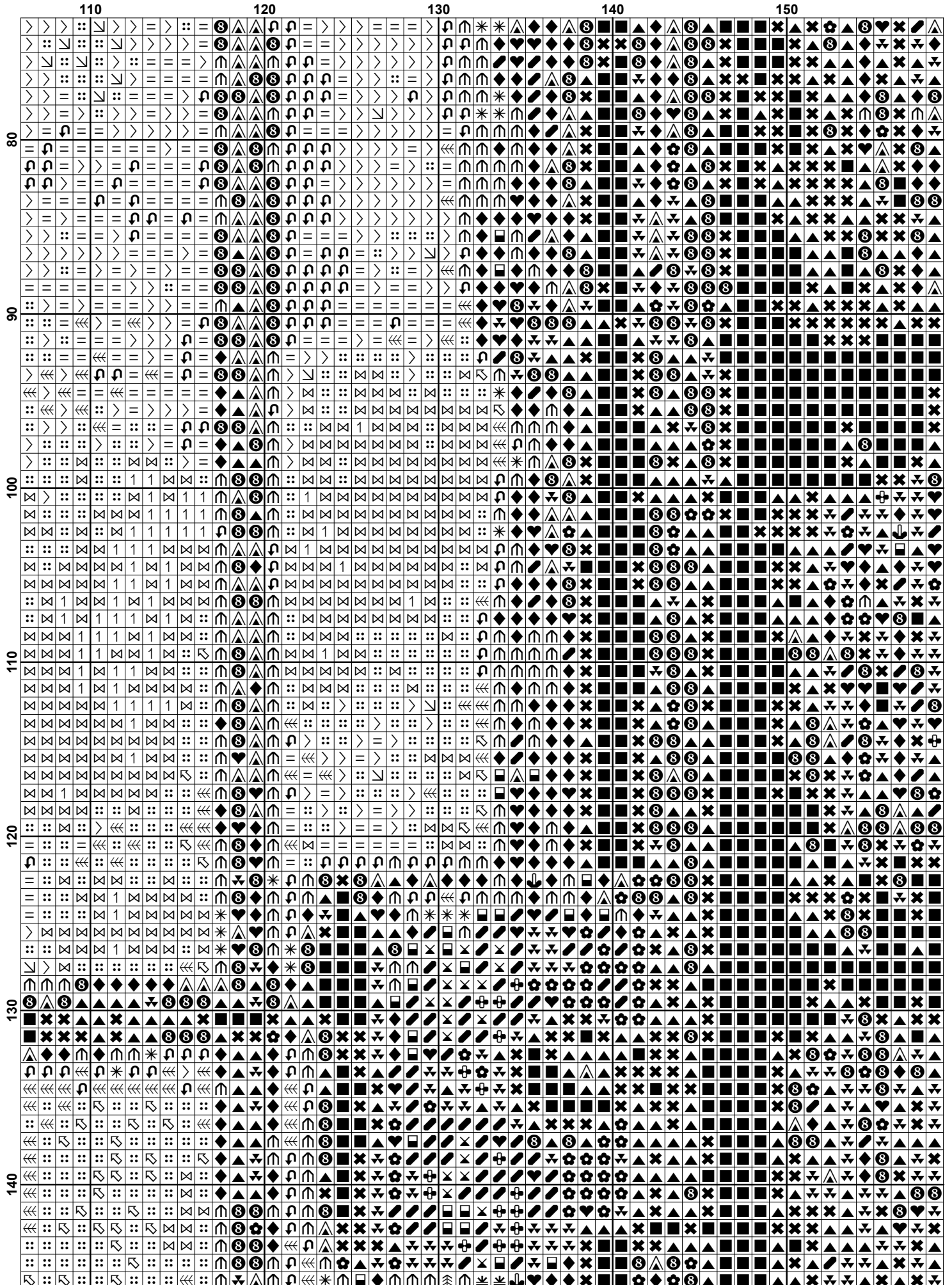




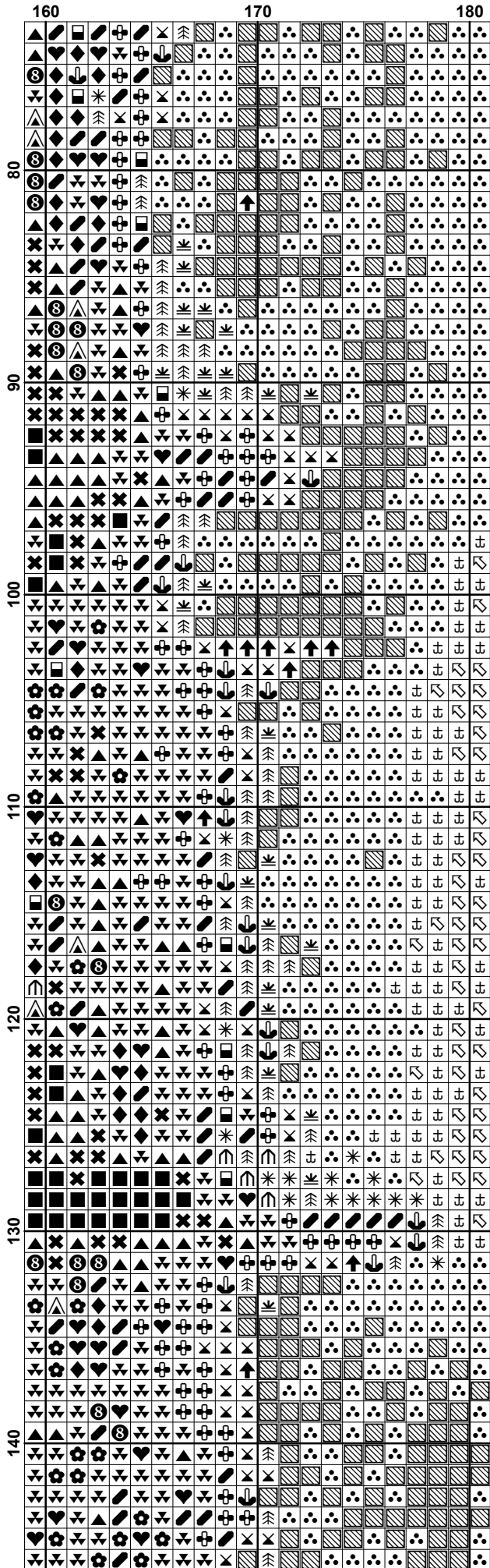


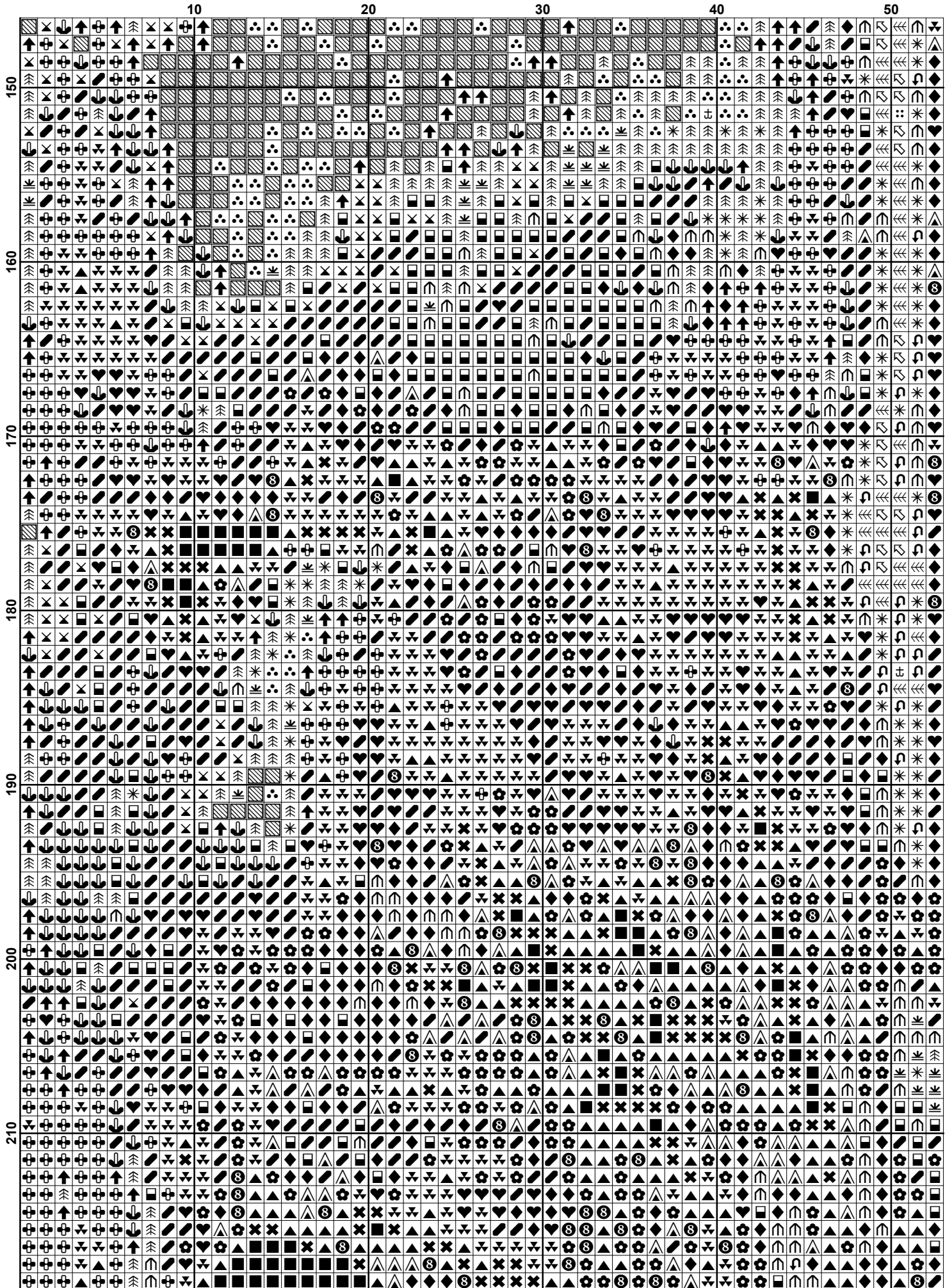


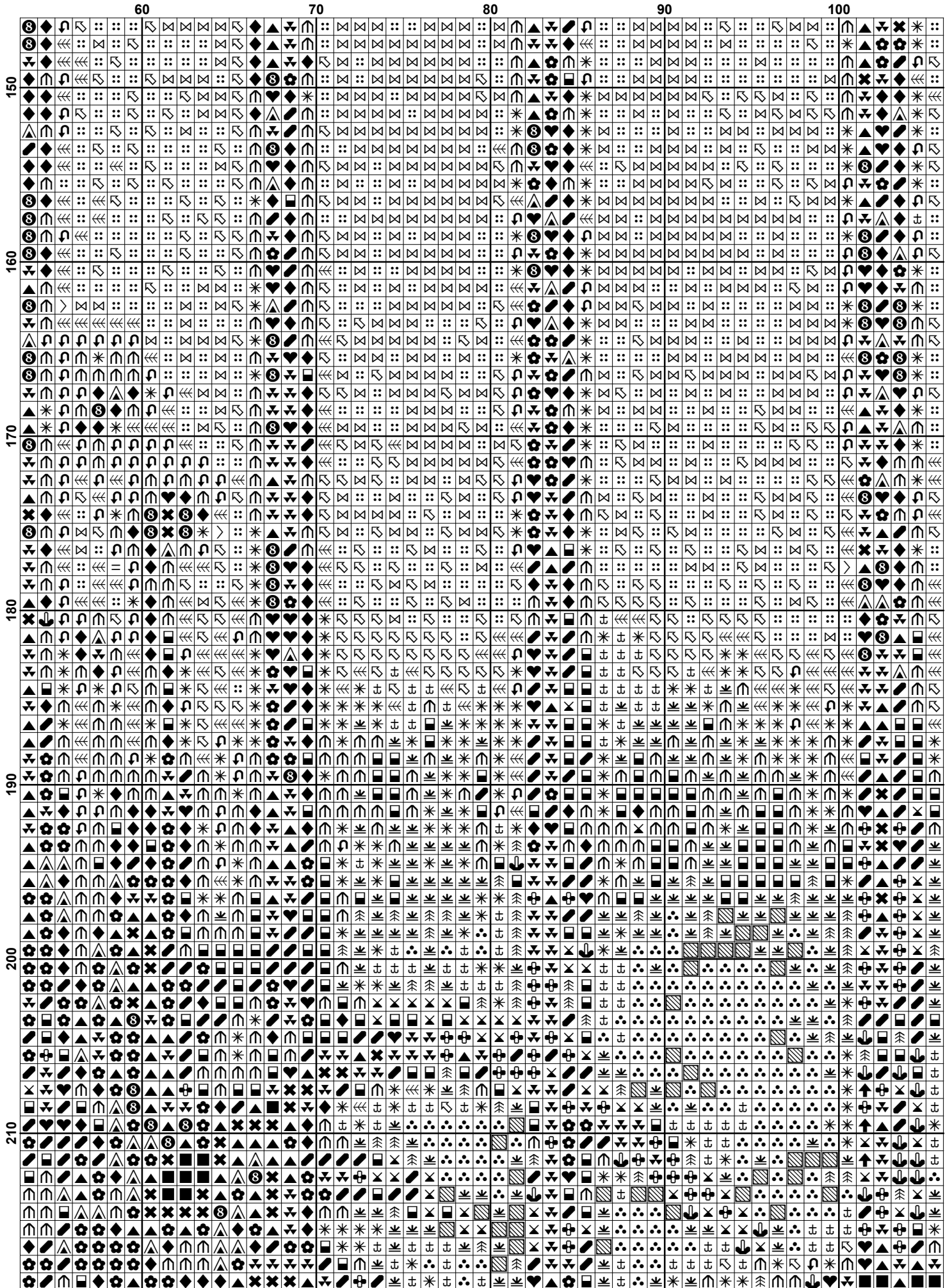


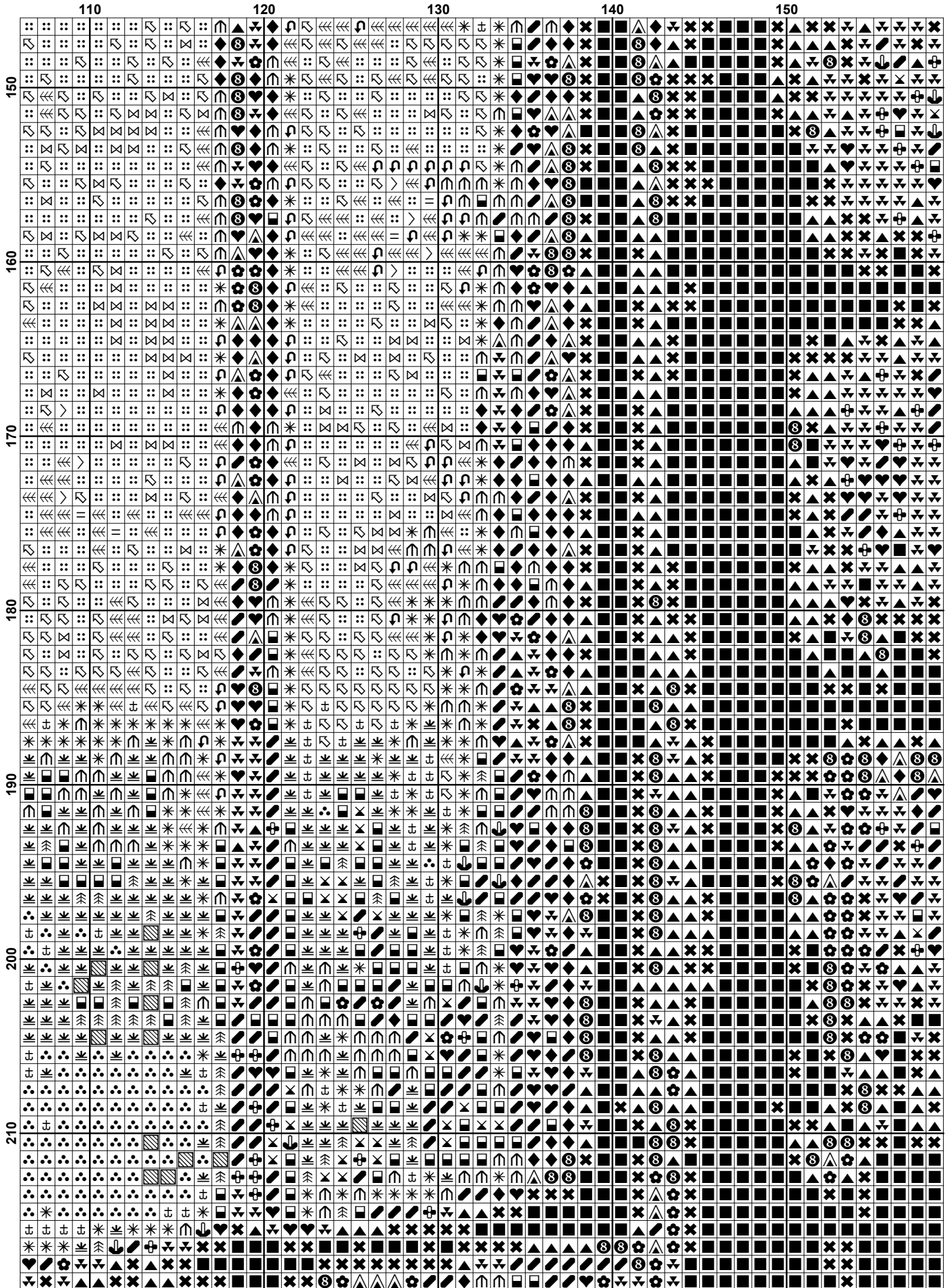


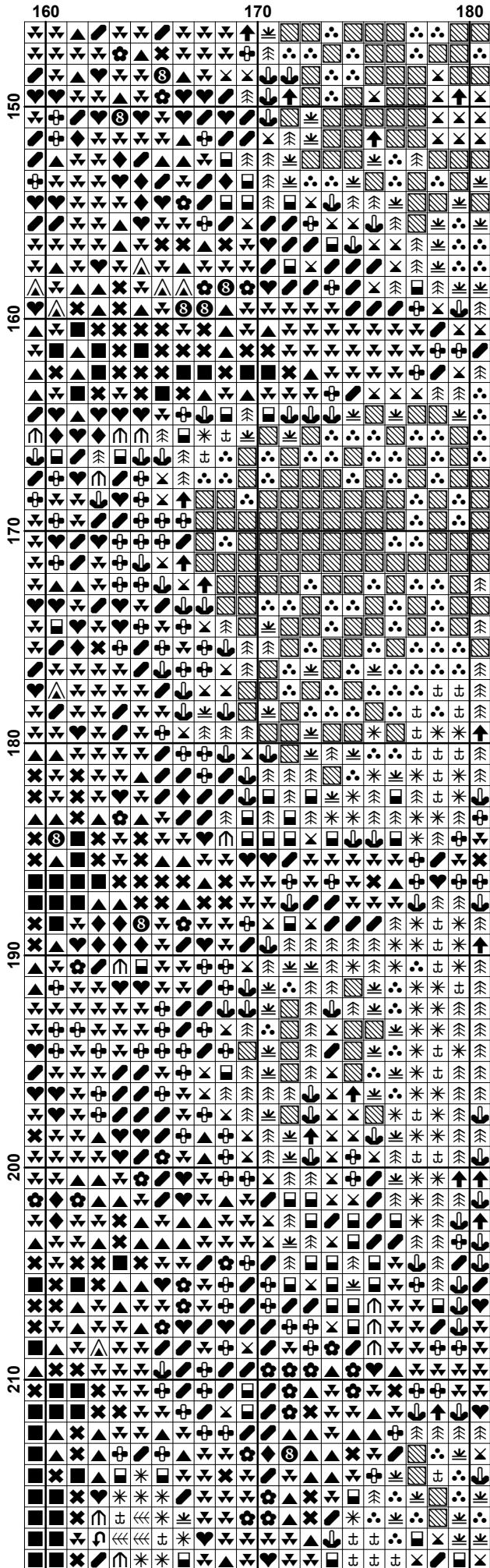


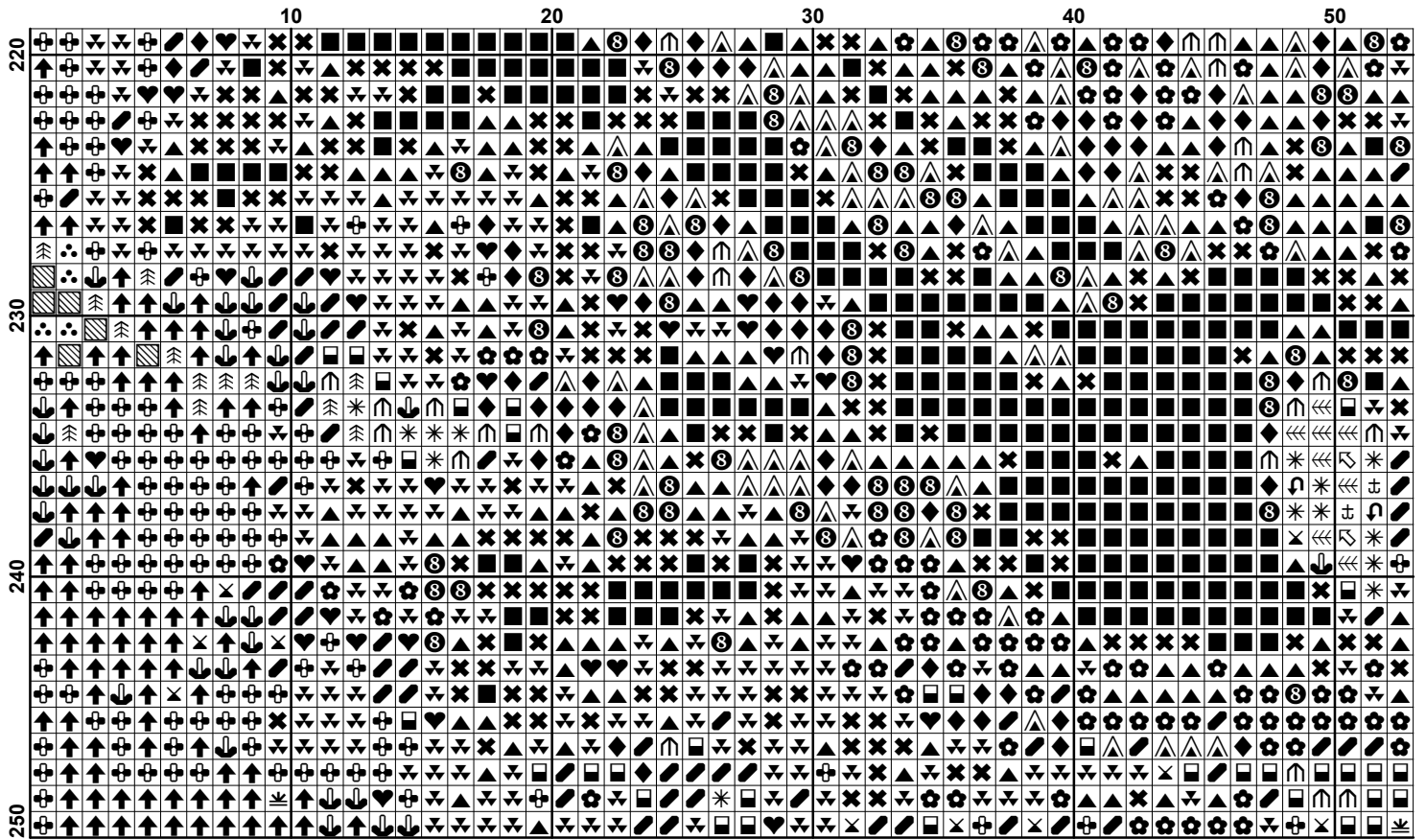


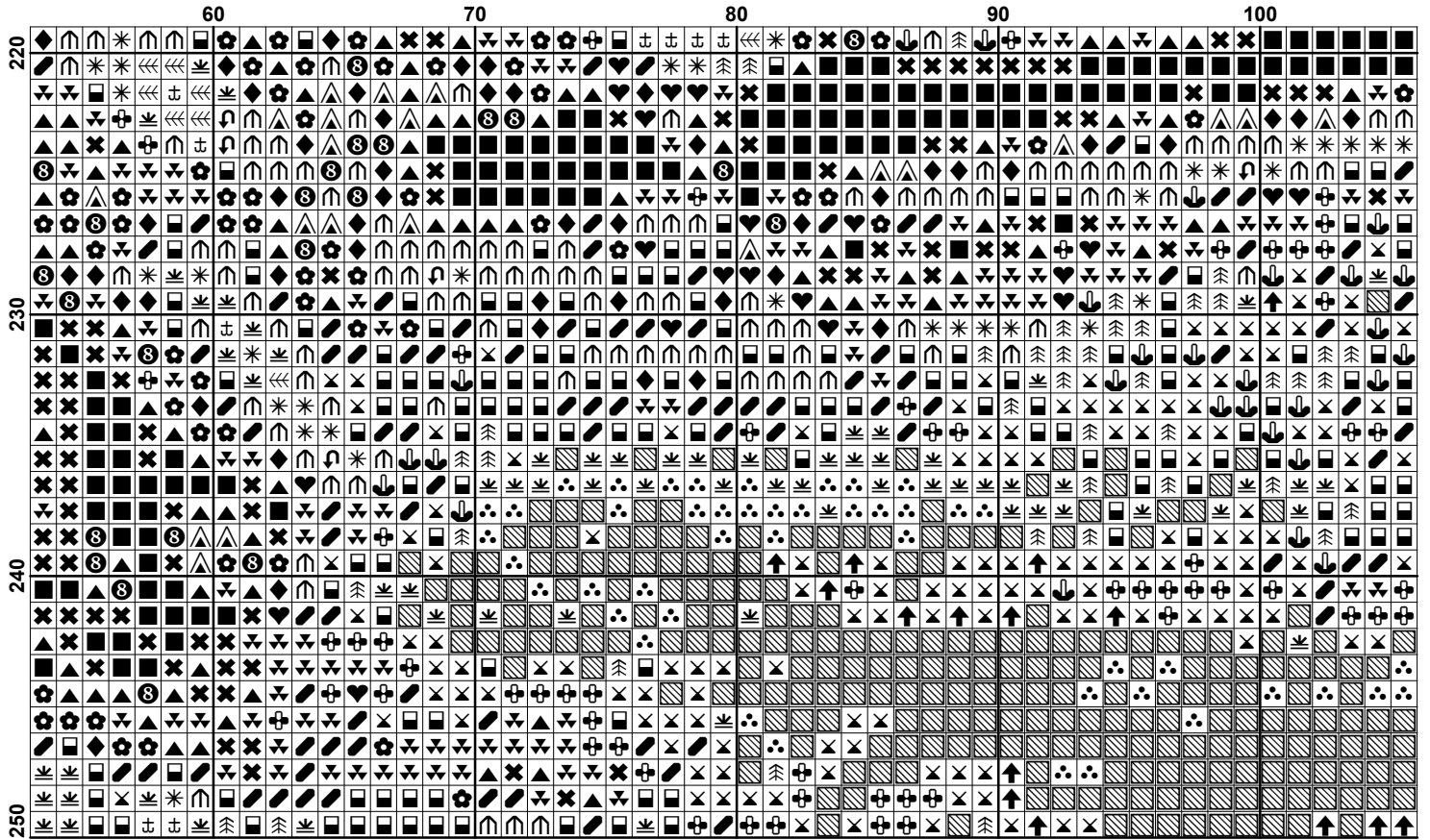


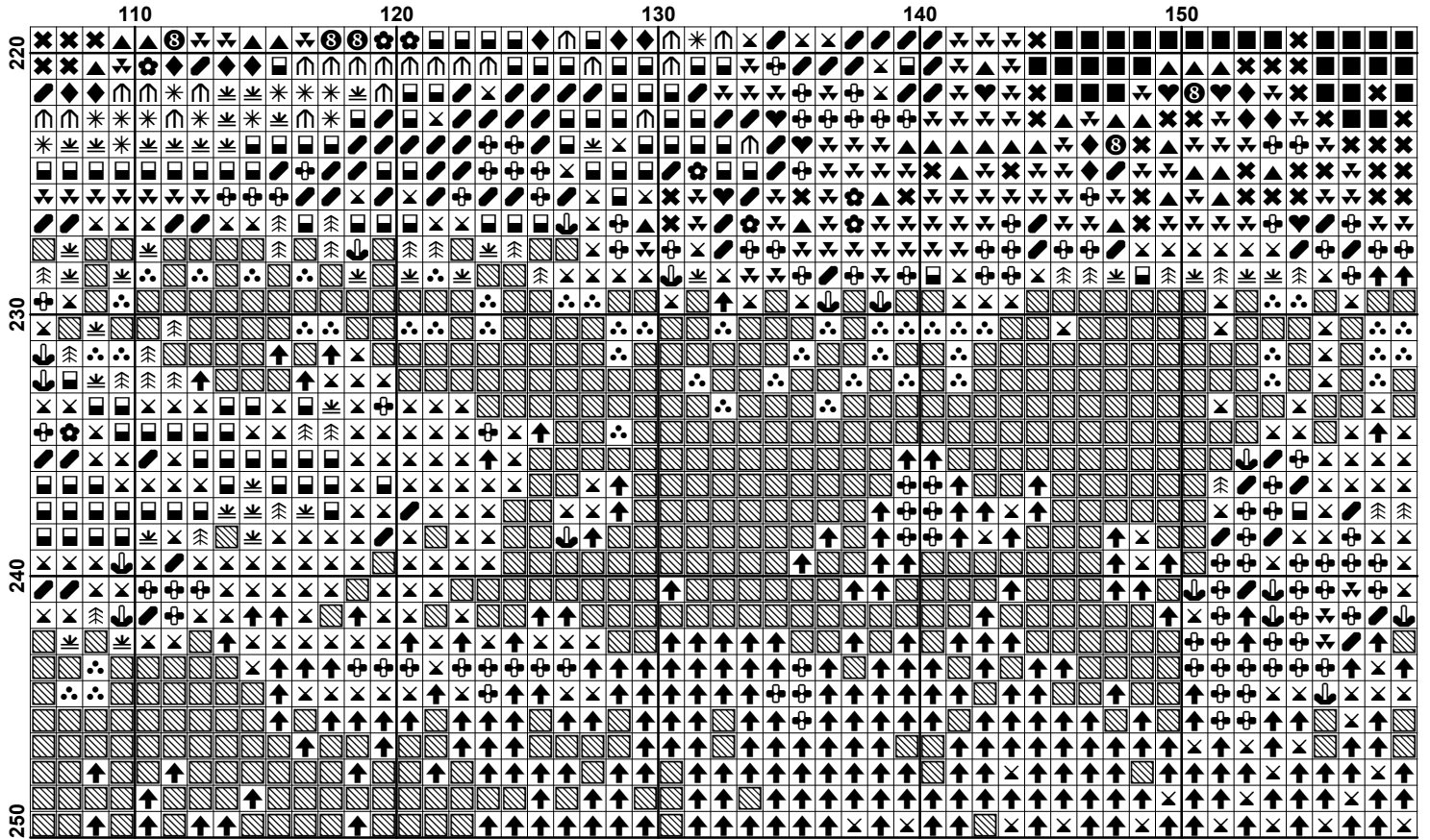




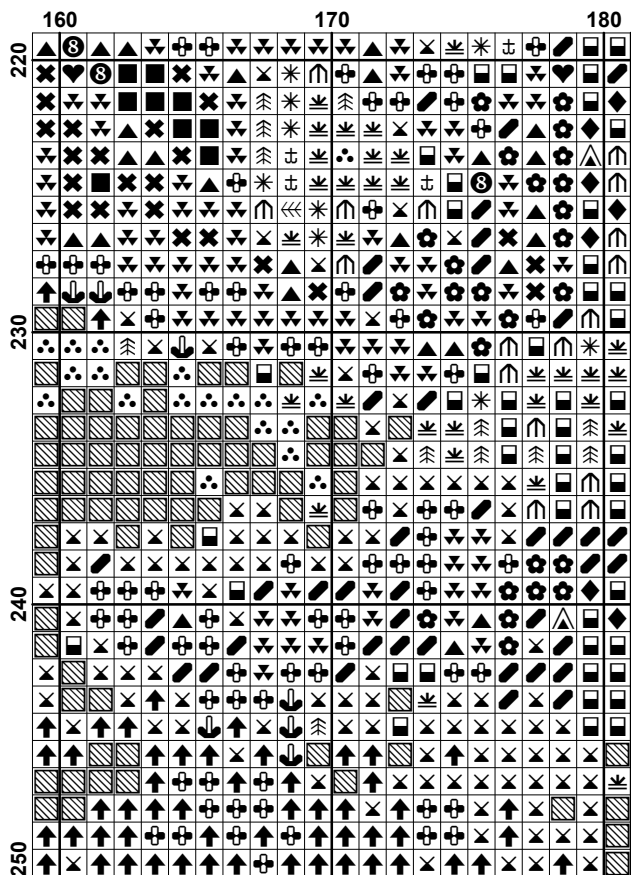








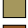











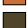




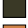
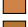









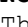






**Pattern Name:** Garden Gate  
**Designed By:** Free Cross Stitch Charts  
**Company:** freecrossstitchcharts.com  
**Copyright:** Free Cross Stitch Charts  
**Fabric:** Aida 14, White  
 181w X 250h Stitches  
**Size(s):** 14 Count, 12-7/8w X 17-3/4h in  
 16 Count, 11-1/4w X 15-5/8h in  
 18 Count, 10w X 13-7/8h in  
 22 Count, 8-1/8w X 11-1/4h in

**Floss Used for Full Stitches:**

Symbol	Strands	Type	Number	Color
	2	DMC	300	Mahogany-VY DK
	2	DMC	310	Black
	2	DMC	371	Mustard
	2	DMC	400	Mahogany-DK
	2	DMC	434	Brown-LT
	2	DMC	436	Tan
	2	DMC	610	Drab Brown-DK
	2	DMC	613	Drab Brown-VY LT
	2	DMC	644	Beige Gray-MD
	2	DMC	729	Old Gold-MD
	2	DMC	738	Tan-VY LT
	2	DMC	739	Tan-UL VY LT
	2	DMC	781	Topaz-VY DK
	2	DMC	801	Coffee Brown-DK
	2	DMC	829	Golden Olive-VY DK
	2	DMC	921	Copper
	2	DMC	938	Coffee Brown-UL DK
	2	DMC	948	Peach-VY LT
	2	DMC	951	Tawny-LT
	2	DMC	975	Golden Brown-DK
	2	DMC	3033	Mocha Brown-VY LT
	2	DMC	3371	Black Brown
	2	DMC	3776	Mahogany-LT
	2	DMC	3826	Golden Brown
	2	DMC	3827	Golden Brown-Pale
	2	DMC	3829	Old Gold-VY DK
	2	DMC	3853	Autumn Gold-DK
	2	DMC	3854	Autumn Gold-MD
	2	DMC	3856	Mahogany-UL VY LT
	2	DMC	3862	Mocha Beige-DK
	2	DMC	3864	Mocha Beige-LT

**Notes:**

This pattern is for personal use only.

**Usage Summary**

**Strands Per Skein:** 6

**Skein Length:** 313.0 in

Type	Number	Full	Half	Quarter	Petite	Back(in)	Str(in)	Spec(in)	French	Bead	Skein Est.
DMC 300	2626	0	0	0	0	0.0	0.0	0.0	0	0	2.000
DMC 310	2163	0	0	0	0	0.0	0.0	0.0	0	0	1.000
DMC 371	1746	0	0	0	0	0.0	0.0	0.0	0	0	1.000
DMC 400	1308	0	0	0	0	0.0	0.0	0.0	0	0	1.000
DMC 434	1788	0	0	0	0	0.0	0.0	0.0	0	0	1.000
DMC 436	877	0	0	0	0	0.0	0.0	0.0	0	0	1.000
DMC 610	1081	0	0	0	0	0.0	0.0	0.0	0	0	1.000
DMC 613	1210	0	0	0	0	0.0	0.0	0.0	0	0	1.000
DMC 644	1879	0	0	0	0	0.0	0.0	0.0	0	0	1.000
DMC 729	916	0	0	0	0	0.0	0.0	0.0	0	0	1.000
DMC 738	683	0	0	0	0	0.0	0.0	0.0	0	0	1.000
DMC 739	2836	0	0	0	0	0.0	0.0	0.0	0	0	2.000
DMC 781	1190	0	0	0	0	0.0	0.0	0.0	0	0	1.000
DMC 801	1387	0	0	0	0	0.0	0.0	0.0	0	0	1.000
DMC 829	1041	0	0	0	0	0.0	0.0	0.0	0	0	1.000
DMC 921	928	0	0	0	0	0.0	0.0	0.0	0	0	1.000
DMC 938	2369	0	0	0	0	0.0	0.0	0.0	0	0	2.000
DMC 948	813	0	0	0	0	0.0	0.0	0.0	0	0	1.000
DMC 951	3179	0	0	0	0	0.0	0.0	0.0	0	0	2.000
DMC 975	686	0	0	0	0	0.0	0.0	0.0	0	0	1.000
DMC 3033	895	0	0	0	0	0.0	0.0	0.0	0	0	1.000
DMC 3371	1634	0	0	0	0	0.0	0.0	0.0	0	0	1.000
DMC 3776	860	0	0	0	0	0.0	0.0	0.0	0	0	1.000
DMC 3826	567	0	0	0	0	0.0	0.0	0.0	0	0	1.000
DMC 3827	338	0	0	0	0	0.0	0.0	0.0	0	0	1.000
DMC 3829	1447	0	0	0	0	0.0	0.0	0.0	0	0	1.000
DMC 3853	3444	0	0	0	0	0.0	0.0	0.0	0	0	2.000
DMC 3854	1473	0	0	0	0	0.0	0.0	0.0	0	0	1.000
DMC 3856	694	0	0	0	0	0.0	0.0	0.0	0	0	1.000
DMC 3862	1452	0	0	0	0	0.0	0.0	0.0	0	0	1.000
DMC 3864	1740	0	0	0	0	0.0	0.0	0.0	0	0	1.000