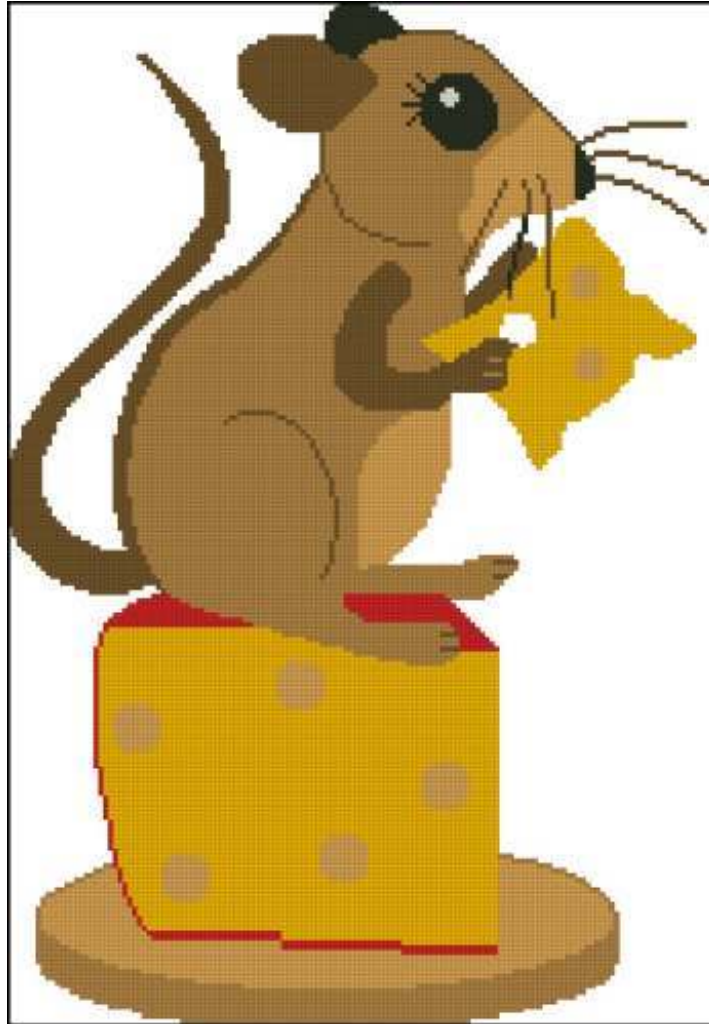


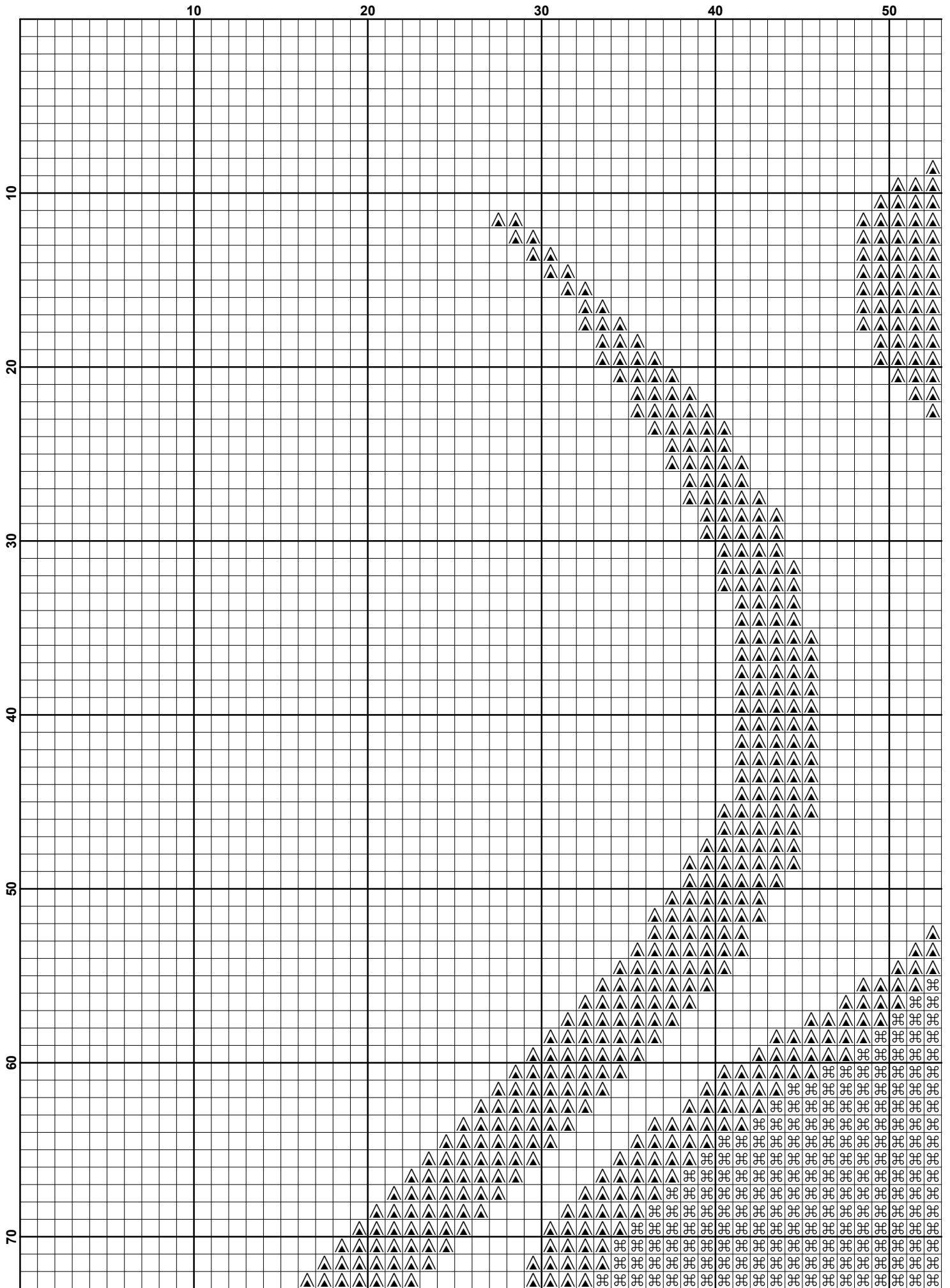
Free Cross Stitch Charts

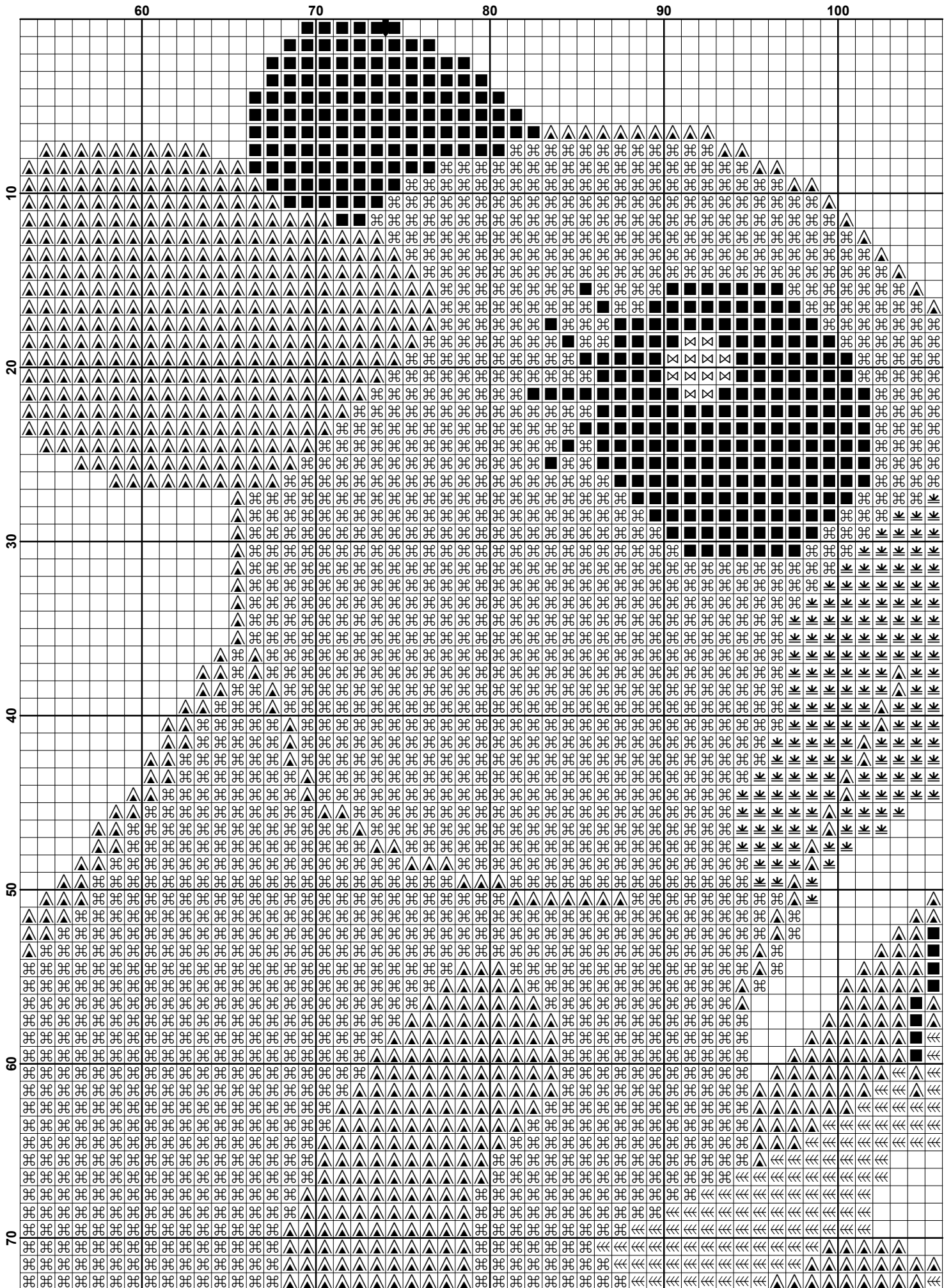
Eating Cheese

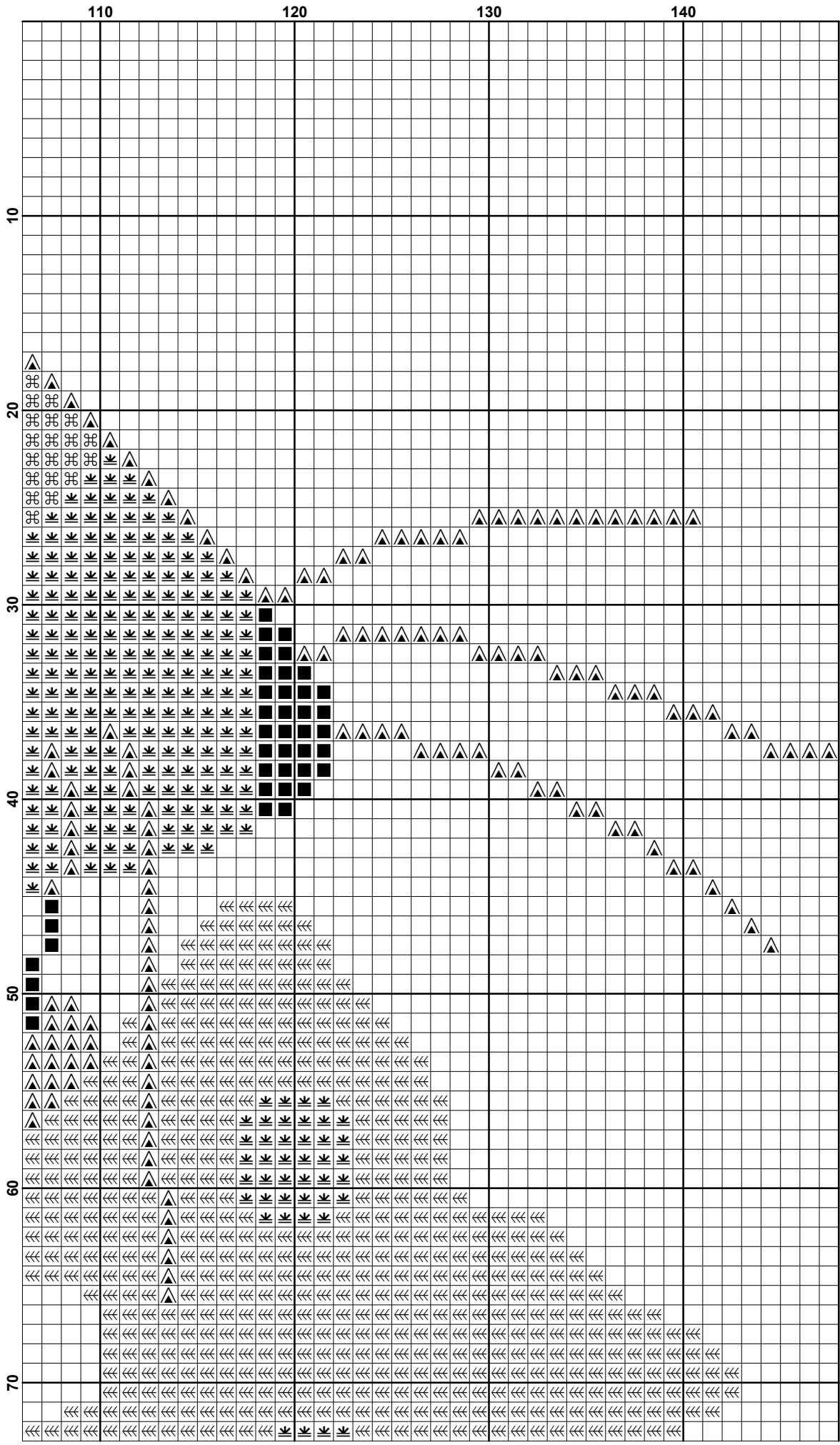


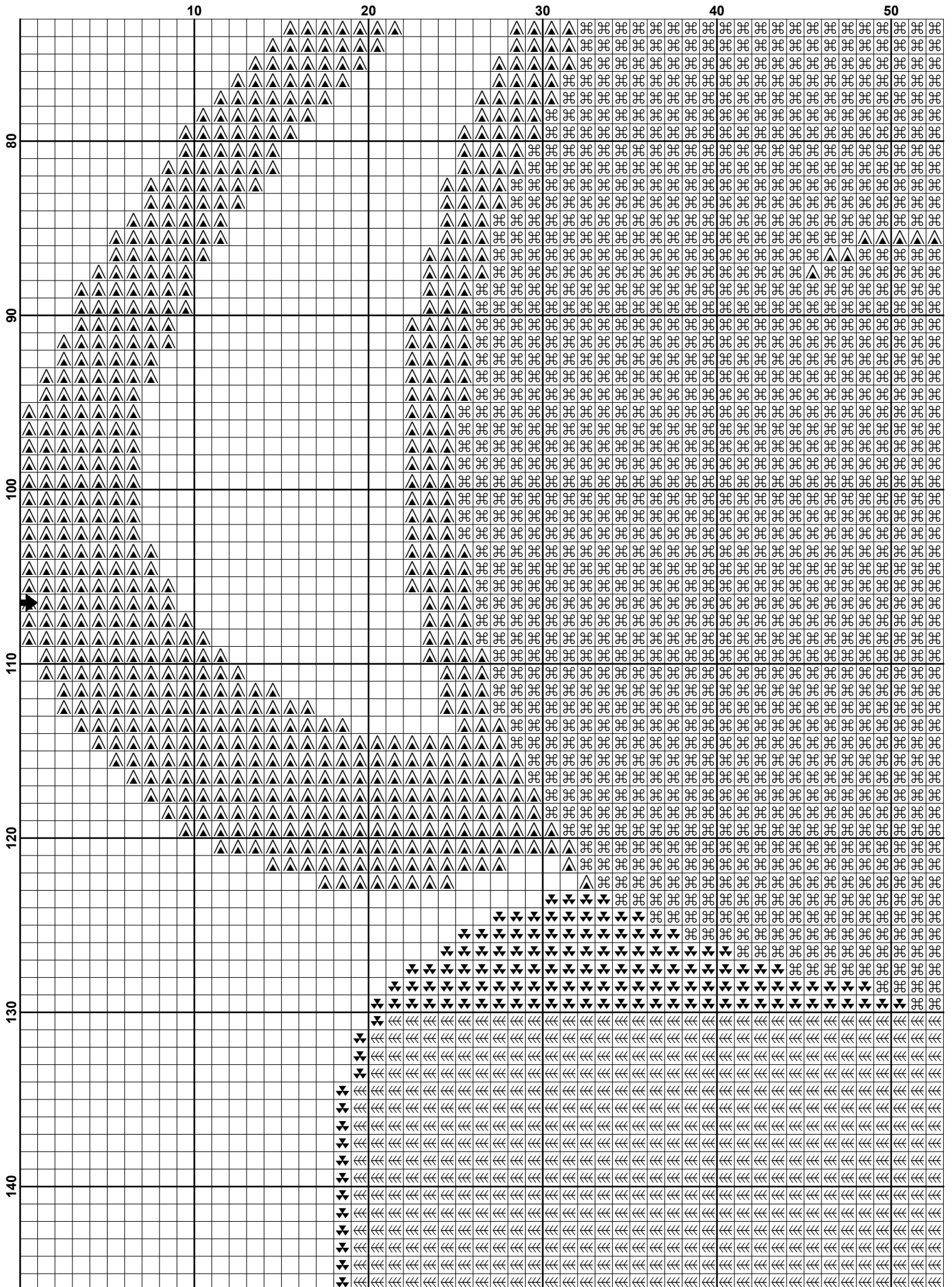
This cross stitch pattern is strictly for personal use only. Please respect my copyright.

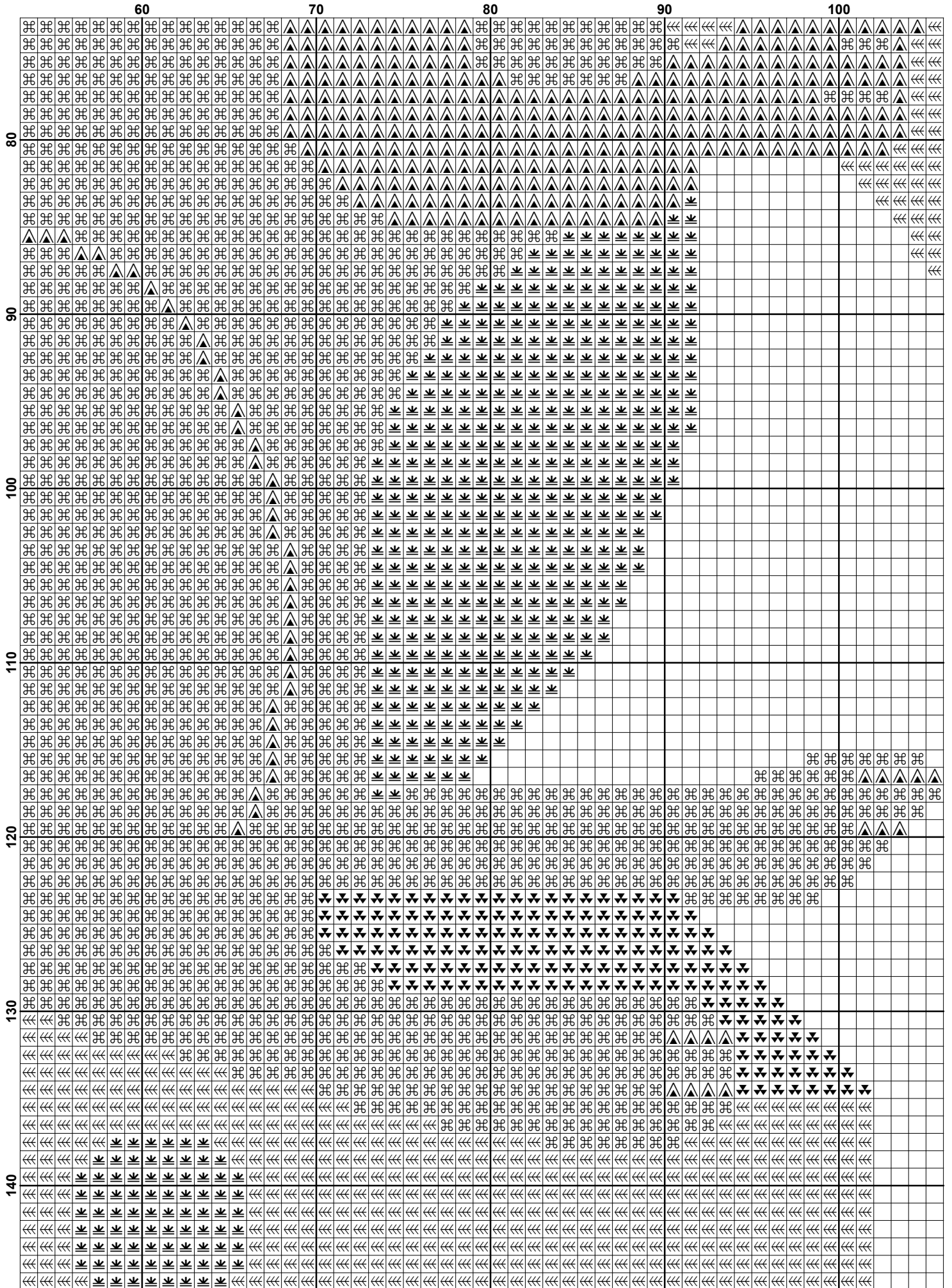
www.freecrossstitchcharts.com

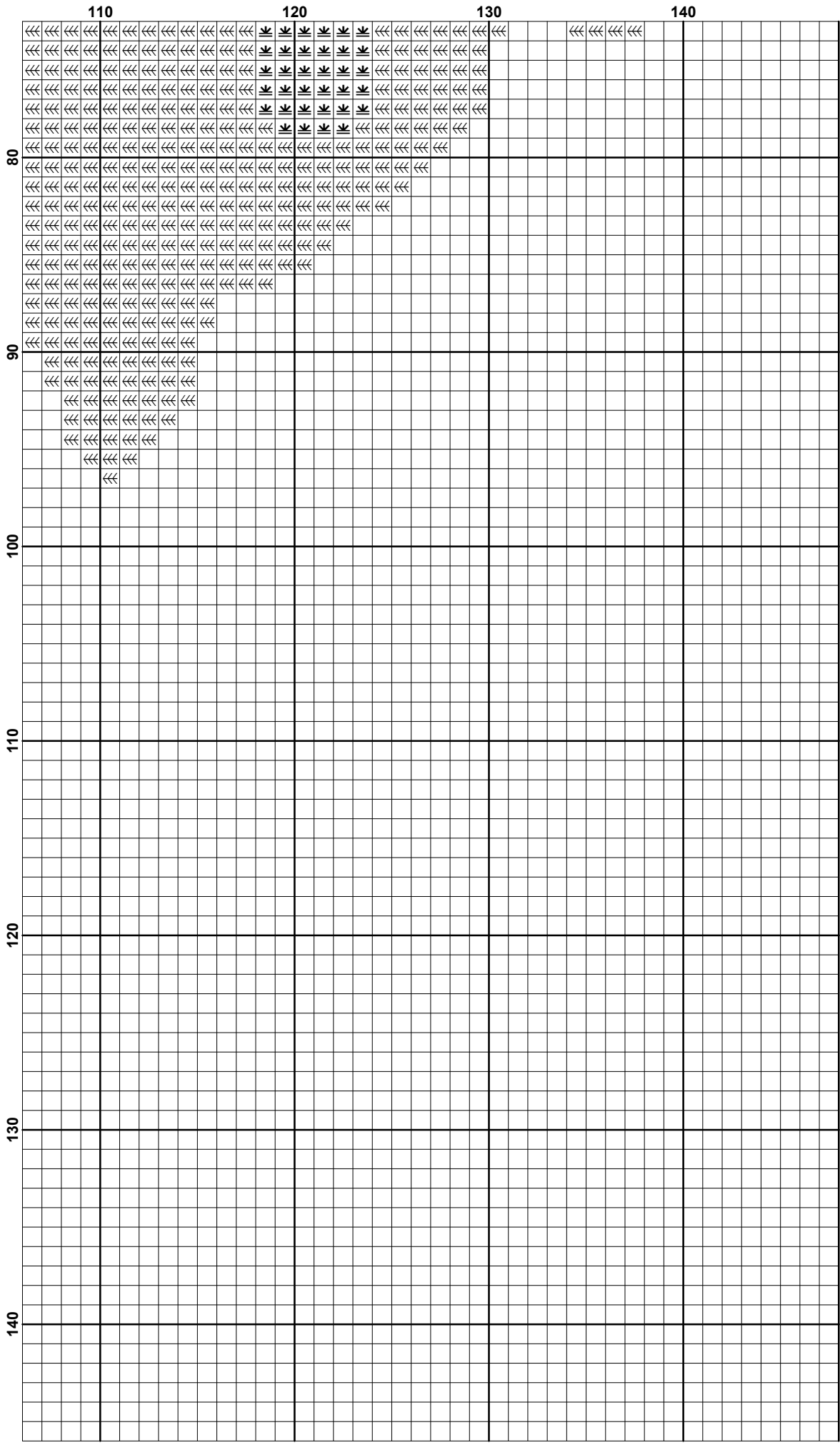


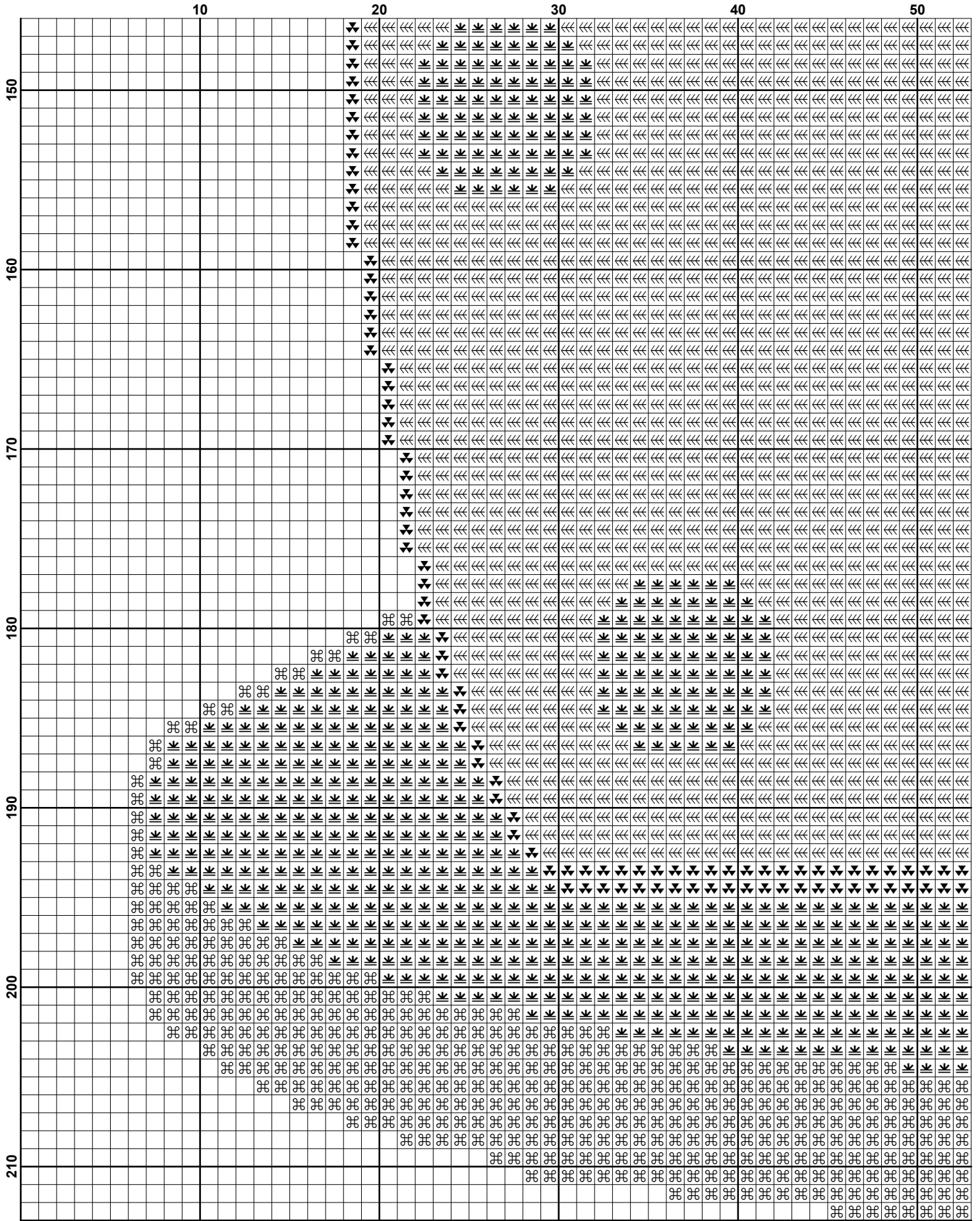



















	60	70	80	90	100					
150					
160					
170					
180
190
200
210

	110	120	130	140
150				
160				
170				
180	⌘ ⌘			
190	⌘ ⌘ ⌘ ⌘			
200	⌘ ⌘ ⌘ ⌘ ⌘ ⌘			
210	⌘ ⌘ ⌘ ⌘ ⌘ ⌘ ⌘ ⌘			

Pattern Name: Eating Cheese
Designed By: Free Cross Stitch Charts
Company: freecrossstitchcharts.com
Copyright: Free Cross Stitch Charts
Fabric: Aida 14, White
 148w X 213h Stitches
Size(s): 14 Count, 10-1/2w X 15-1/8h in
 16 Count, 9-1/4w X 13-1/4h in
 18 Count, 8-1/8w X 11-3/4h in
 22 Count, 6-5/8w X 9-5/8h in

Floss Used for Full Stitches:

Symbol	Strands	Type	Number	Color
	2	DMC	310	Black
	2	DMC	433	Brown-MD
	2	DMC	435	Brown-VY LT
	2	DMC	666	Christmas Red-BRT
	2	DMC	712	Cream
	2	DMC	972	Canary-DK
	2	DMC	977	Golden Brown-LT

Notes:

This pattern is for personal use only.

Usage Summary**Strands Per Skein:** 6**Skein Length:** 313.0 in

Type	Number	Full	Half	Quarter	Petite	Back(in)	Str(in)	Spec(in)	French	Bead	Skein Est.
■ DMC	310	384	0	0	0	0.0	0.0	0.0	0	0	1.000
■ DMC	433	2418	0	0	0	0.0	0.0	0.0	0	0	2.000
■ DMC	435	6037	0	0	0	0.0	0.0	0.0	0	0	3.000
■ DMC	666	501	0	0	0	0.0	0.0	0.0	0	0	1.000
■ DMC	712	12	0	0	0	0.0	0.0	0.0	0	0	1.000
■ DMC	972	5539	0	0	0	0.0	0.0	0.0	0	0	3.000
■ DMC	977	2600	0	0	0	0.0	0.0	0.0	0	0	2.000